

# Anti-OXR1 Antibody

Rabbit polyclonal antibody to OXR1  
Catalog # AP60972

## Product Information

---

<b>Application</b>	WB, IHC
<b>Primary Accession</b>	<a href="#">Q8N573</a>
<b>Other Accession</b>	<a href="#">Q4KMM3</a>
<b>Reactivity</b>	Human, Mouse, Rat
<b>Host</b>	Rabbit
<b>Clonality</b>	Polyclonal
<b>Calculated MW</b>	97970

## Additional Information

---

<b>Gene ID</b>	55074
<b>Other Names</b>	Oxidation resistance protein 1
<b>Target/Specificity</b>	KLH-conjugated synthetic peptide encompassing a sequence within the center region of human OXR1. The exact sequence is proprietary.
<b>Dilution</b>	WB~~WB (1/500 - 1/1000), IHC (1/50 - 1/100) IHC~~WB (1/500 - 1/1000), IHC (1/50 - 1/100)
<b>Format</b>	Liquid in 0.42% Potassium phosphate, 0.87% Sodium chloride, pH 7.3, 30% glycerol, and 0.09% (W/V) sodium azide.
<b>Storage</b>	Store at -20 °C.Stable for 12 months from date of receipt

## Protein Information

---

<b>Name</b>	OXR1
<b>Function</b>	May be involved in protection from oxidative damage.
<b>Cellular Location</b>	Mitochondrion.

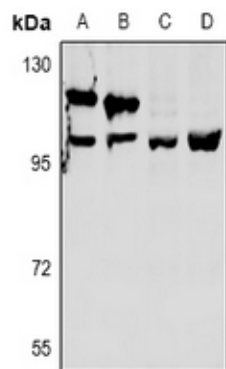
## Background

---

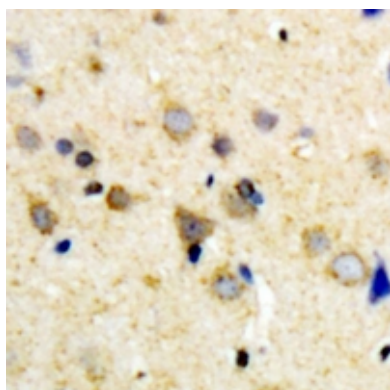
KLH-conjugated synthetic peptide encompassing a sequence within the center region of human OXR1. The exact sequence is proprietary.

## Images

---



Western blot analysis of OXR1 expression in PC12 (A), AML12 (B), LO2 (C), SGC7901 (D) whole cell lysates.



Immunohistochemical analysis of OXR1 staining in human brain formalin fixed paraffin embedded tissue section. The section was pre-treated using heat mediated antigen retrieval with sodium citrate buffer (pH 6.0). The section was then incubated with the antibody at room temperature and detected using an HRP conjugated compact polymer system. DAB was used as the chromogen. The section was then counterstained with haematoxylin and mounted with DPX.

Please note: All products are 'FOR RESEARCH USE ONLY. NOT FOR USE IN DIAGNOSTIC OR THERAPEUTIC PROCEDURES'.