

Anti-ZDHHC15 Antibody

Rabbit polyclonal antibody to ZDHHC15

Catalog # AP60973

Product Information

Application	WB
Primary Accession	Q96MV8
Other Accession	Q8BGJ0
Reactivity	Human, Mouse, Rat
Host	Rabbit
Clonality	Polyclonal
Calculated MW	39331

Additional Information

Gene ID	158866
Other Names	Palmitoyltransferase ZDHHC15; Zinc finger DHHC domain-containing protein 15; DHHC-15
Target/Specificity	Recognizes endogenous levels of ZDHHC15 protein.
Dilution	WB~~WB (1/500 - 1/1000)
Format	Liquid in 0.42% Potassium phosphate, 0.87% Sodium chloride, pH 7.3, 30% glycerol, and 0.09% (W/V) sodium azide.
Storage	Store at -20 °C.Stable for 12 months from date of receipt

Protein Information

Name	ZDHHC15 (HGNC:20342)
Function	Palmitoyltransferase that catalyzes the addition of palmitate onto various protein substrates (PubMed: 18817523 , PubMed: 23034182). Has no stringent fatty acid selectivity and in addition to palmitate can also transfer onto target proteins myristate from tetradecanoyl-CoA and stearate from octadecanoyl-CoA (By similarity). Palmitoylates IGF2R and SORT1, promoting their partitioning to an endosomal membrane subdomain where they can interact with the retromer cargo-selective complex (PubMed: 18817523). Thereby, regulates retrograde transport from endosomes to the Golgi apparatus of these lysosomal sorting receptors and plays a role in trafficking of lysosomal proteins (PubMed: 18817523). In the nervous system, catalyzes the palmitoylation of DLG4/PSD95 and regulates its synaptic clustering and function in synaptogenesis (By similarity). Could be involved in the differentiation of dopaminergic neurons and the development of the diencephalon (By similarity). Could also catalyze the palmitoylation of GAP43

(By similarity). Could also palmitoylate DNAJC5 and regulate its localization to the Golgi membrane (By similarity). Could also palmitoylate FYN as shown in vitro (PubMed:[19956733](#)). May palmitoylate CALHM3 subunit of gustatory voltage-gated ion channels and modulate channel gating and kinetics.

Cellular Location

Golgi apparatus membrane; Multi-pass membrane protein {ECO:0000250|UniProtKB:F1QXD3}. Postsynaptic density {ECO:0000250|UniProtKB:Q2TGJ4}

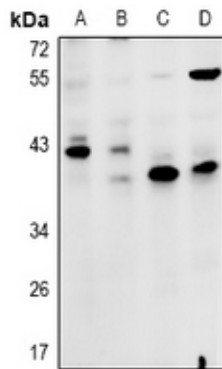
Tissue Location

Expressed in placenta, liver, lung, kidney, heart and brain.

Background

KLH-conjugated synthetic peptide encompassing a sequence within the C-term region of human ZDHHC15. The exact sequence is proprietary.

Images



Western blot analysis of ZDHHC15 expression in HEK293T (A), HepG2 (B), AML12 (C), C6 (D) whole cell lysates.

Please note: All products are 'FOR RESEARCH USE ONLY. NOT FOR USE IN DIAGNOSTIC OR THERAPEUTIC PROCEDURES'.