

Anti-p46 Antibody

Rabbit polyclonal antibody to p46

Catalog # AP60976

Product Information

Application	WB, IHC
Primary Accession	Q9BY77
Other Accession	Q8BG81
Reactivity	Human, Mouse, Rat
Host	Rabbit
Clonality	Polyclonal
Calculated MW	46089

Additional Information

Gene ID	84271
Other Names	KIAA1649; PDIP46; Polymerase delta-interacting protein 3; 46 kDa DNA polymerase delta interaction protein; p46; S6K1 Aly/REF-like target; SKAR
Target/Specificity	Recognizes endogenous levels of p46 protein.
Dilution	WB~~WB (1/500 - 1/1000), IHC (1/50 - 1/100) IHC~~WB (1/500 - 1/1000), IHC (1/50 - 1/100)
Format	Liquid in 0.42% Potassium phosphate, 0.87% Sodium chloride, pH 7.3, 30% glycerol, and 0.09% (W/V) sodium azide.
Storage	Store at -20 °C.Stable for 12 months from date of receipt

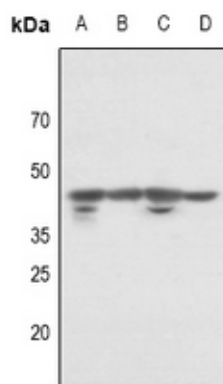
Protein Information

Name	POLDIP3
Synonyms	KIAA1649, PDIP46
Function	Is involved in regulation of translation. Is preferentially associated with CBC-bound spliced mRNA-protein complexes during the pioneer round of mRNA translation. Contributes to enhanced translational efficiency of spliced over nonspliced mRNAs. Recruits activated ribosomal protein S6 kinase beta-1 I/RPS6KB1 to newly synthesized mRNA. Involved in nuclear mRNA export; probably mediated by association with the TREX complex.
Cellular Location	Nucleus. Nucleus speckle. Cytoplasm. Note=Nucleocytoplasmic shuttling protein

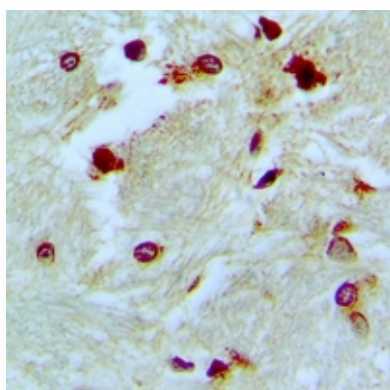
Background

KLH-conjugated synthetic peptide encompassing a sequence within the C-term region of human p46. The exact sequence is proprietary.

Images



Western blot analysis of p46 expression in PC12 (A), CT26 (B), Hela (C), MCF7 (D) whole cell lysates.



Immunohistochemical analysis of p46 staining in human brain formalin fixed paraffin embedded tissue section. The section was pre-treated using heat mediated antigen retrieval with sodium citrate buffer (pH 6.0). The section was then incubated with the antibody at room temperature and detected using an HRP conjugated compact polymer system. DAB was used as the chromogen. The section was then counterstained with haematoxylin and mounted with DPX.

Please note: All products are 'FOR RESEARCH USE ONLY. NOT FOR USE IN DIAGNOSTIC OR THERAPEUTIC PROCEDURES'.