

Anti-Gemin3 Antibody

Rabbit polyclonal antibody to Gemin3

Catalog # AP60980

Product Information

| | |
|-------------------|------------------------|
| Application | WB |
| Primary Accession | Q9UHI6 |
| Other Accession | Q9JIY4 |
| Reactivity | Human, Mouse, Rat |
| Host | Rabbit |
| Clonality | Polyclonal |
| Calculated MW | 92241 |

Additional Information

| | |
|--------------------|---|
| Gene ID | 11218 |
| Other Names | DP103; GEMIN3; Probable ATP-dependent RNA helicase DDX20; Component of gems 3; DEAD box protein 20; DEAD box protein DP 103; Gemin-3 |
| Target/Specificity | KLH-conjugated synthetic peptide encompassing a sequence within the center region of human Gemin3. The exact sequence is proprietary. |
| Dilution | WB~~WB (1/500 - 1/1000) |
| Format | Liquid in 0.42% Potassium phosphate, 0.87% Sodium chloride, pH 7.3, 30% glycerol, and 0.09% (W/V) sodium azide. |
| Storage | Store at -20 °C.Stable for 12 months from date of receipt |

Protein Information

| | |
|----------|---|
| Name | DDX20 |
| Synonyms | DP103, GEMIN3 |
| Function | <p>The SMN complex catalyzes the assembly of small nuclear ribonucleoproteins (snRNPs), the building blocks of the spliceosome, and thereby plays an important role in the splicing of cellular pre- mRNAs. Most spliceosomal snRNPs contain a common set of Sm proteins SNRPB, SNRPD1, SNRPD2, SNRPD3, SNRPE, SNRPF and SNRPG that assemble in a heptameric protein ring on the Sm site of the small nuclear RNA to form the core snRNP (Sm core). In the cytosol, the Sm proteins SNRPD1, SNRPD2, SNRPE, SNRPF and SNRPG are trapped in an inactive 6S pICln-Sm complex by the chaperone CLNS1A that controls the assembly of the core snRNP. To assemble core snRNPs, the SMN complex accepts the trapped 5Sm proteins from CLNS1A forming an intermediate. Binding of snRNA inside 5Sm triggers eviction of the</p> |

SMN complex, thereby allowing binding of SNRPD3 and SNRPB to complete assembly of the core snRNP. May also play a role in the metabolism of small nucleolar ribonucleoprotein (snoRNPs).

Cellular Location

Cytoplasm. Nucleus, gem Note=Localized in subnuclear structures next to coiled bodies, called Gemini or Cajal bodies (Gems).

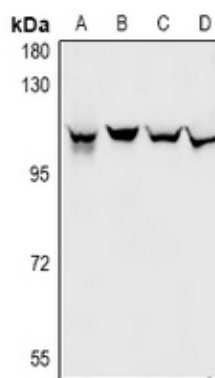
Tissue Location

Ubiquitous.

Background

KLH-conjugated synthetic peptide encompassing a sequence within the center region of human Gemin3. The exact sequence is proprietary.

Images



Western blot analysis of Gemin3 expression in A549 (A), HCC827 (B), H9C2 (C), CT26 (D) whole cell lysates.

Please note: All products are 'FOR RESEARCH USE ONLY. NOT FOR USE IN DIAGNOSTIC OR THERAPEUTIC PROCEDURES'.