

Anti-PPP1R16B Antibody

Rabbit polyclonal antibody to PPP1R16B
Catalog # AP60981

Product Information

Application	WB
Primary Accession	Q96T49
Other Accession	Q8VHQ3
Reactivity	Human, Mouse
Host	Rabbit
Clonality	Polyclonal
Calculated MW	63551

Additional Information

Gene ID	26051
Other Names	ANKRD4; KIAA0823; Protein phosphatase 1 regulatory inhibitor subunit 16B; Ankyrin repeat domain-containing protein 4; CAAX box protein TIMAP; TGF-beta-inhibited membrane-associated protein; hTIMAP
Target/Specificity	KLH-conjugated synthetic peptide encompassing a sequence within the center region of human PPP1R16B. The exact sequence is proprietary.
Dilution	WB~~WB (1/500 - 1/1000)
Format	Liquid in 0.42% Potassium phosphate, 0.87% Sodium chloride, pH 7.3, 30% glycerol, and 0.09% (W/V) sodium azide.
Storage	Store at -20 °C.Stable for 12 months from date of receipt

Protein Information

Name	PPP1R16B
Synonyms	ANKRD4, KIAA0823
Function	Regulator of protein phosphatase 1 (PP1) that acts as a positive regulator of pulmonary endothelial cell (EC) barrier function (PubMed: 18586956). Involved in the regulation of the PI3K/AKT signaling pathway, angiogenesis and endothelial cell proliferation (PubMed: 25007873). Regulates angiogenesis and endothelial cell proliferation through the control of ECE1 dephosphorylation, trafficking and activity (By similarity). Protects the endothelial barrier from lipopolysaccharide (LPS)-induced vascular leakage (By similarity). Involved in the regulation of endothelial cell filopodia extension (By similarity). May be a downstream target for TGF-beta1 signaling cascade in endothelial cells (PubMed: 16263087 , PubMed: 18586956). Involved in PKA-mediated moesin

dephosphorylation which is important in EC barrier protection against thrombin stimulation (PubMed:[18586956](#)). Promotes the interaction of PPP1CA with RPSA/LAMR1 and in turn facilitates the dephosphorylation of RPSA/LAMR1 (PubMed:[16263087](#)). Involved in the dephosphorylation of EEF1A1 (PubMed:[26497934](#)).

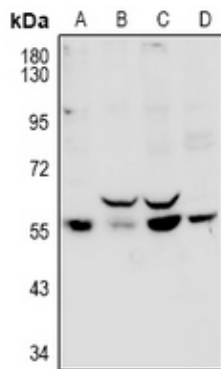
Cellular Location

Cell membrane. Cell membrane; Lipid-anchor. Nucleus. Cell projection. Note=Colocalizes with RPSA/LAMR1 in the cell membrane (PubMed:16263087). Localizes to the perinuclear region (By similarity). Colocalizes with PTEN at the tip of EC projections (PubMed:25007873). {ECO:0000250|UniProtKB:Q95N27, ECO:0000269|PubMed:16263087, ECO:0000269|PubMed:25007873}

Background

KLH-conjugated synthetic peptide encompassing a sequence within the center region of human PPP1R16B. The exact sequence is proprietary.

Images



Western blot analysis of PPP1R16B expression in HEK293T (A), U87MG (B), C6 (C), CT26 (D) whole cell lysates.

Please note: All products are 'FOR RESEARCH USE ONLY. NOT FOR USE IN DIAGNOSTIC OR THERAPEUTIC PROCEDURES'.