

# Anti-S100-Z Antibody

Rabbit polyclonal antibody to S100-Z  
Catalog # AP60983

## Product Information

Application	WB, IHC
Primary Accession	<a href="#">Q8WVG8</a>
Reactivity	Human
Host	Rabbit
Clonality	Polyclonal
Calculated MW	11620

## Additional Information

Gene ID	170591
Other Names	Protein S100-Z; S100 calcium-binding protein Z
Target/Specificity	KLH-conjugated synthetic peptide encompassing a sequence within the N-term region of human S100-Z. The exact sequence is proprietary.
Dilution	WB~~WB (1/500 - 1/1000), IHC (1/50 - 1/100) IHC~~WB (1/500 - 1/1000), IHC (1/50 - 1/100)
Format	Liquid in 0.42% Potassium phosphate, 0.87% Sodium chloride, pH 7.3, 30% glycerol, and 0.09% (W/V) sodium azide.
Storage	Store at -20 °C.Stable for 12 months from date of receipt

## Protein Information

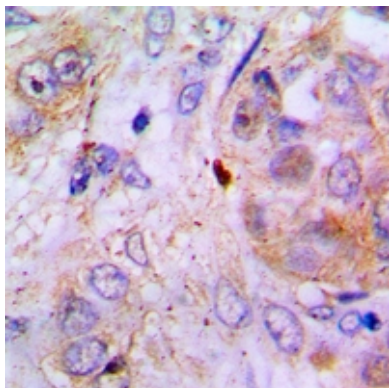
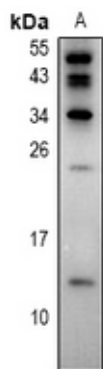
Name	S100Z ( <a href="#">HGNC:30367</a> )
Tissue Location	Highest level of expression in spleen and leukocytes.

## Background

KLH-conjugated synthetic peptide encompassing a sequence within the N-term region of human S100-Z. The exact sequence is proprietary.

## Images

Western blot analysis of S100-Z expression in K562 (A)  
whole cell lysates.



Immunohistochemical analysis of S100-Z staining in human lung cancer formalin fixed paraffin embedded tissue section. The section was pre-treated using heat mediated antigen retrieval with sodium citrate buffer (pH 6.0). The section was then incubated with the antibody at room temperature and detected using an HRP conjugated compact polymer system. DAB was used as the chromogen. The section was then counterstained with haematoxylin and mounted with DPX.

Please note: All products are 'FOR RESEARCH USE ONLY. NOT FOR USE IN DIAGNOSTIC OR THERAPEUTIC PROCEDURES'.