

Anti-APOBEC4 Antibody

Rabbit polyclonal antibody to APOBEC4

Catalog # AP60984

Product Information

Application	WB
Primary Accession	Q8WW27
Other Accession	Q497M3
Reactivity	Human, Mouse, Rat
Host	Rabbit
Clonality	Polyclonal
Calculated MW	41581

Additional Information

Gene ID	403314
Other Names	C1orf169; Putative C->U-editing enzyme APOBEC-4; Apolipoprotein B mRNA-editing enzyme catalytic polypeptide-like 4
Target/Specificity	KLH-conjugated synthetic peptide encompassing a sequence within the C-term region of human APOBEC4. The exact sequence is proprietary.
Dilution	WB~~WB (1/500 - 1/1000)
Format	Liquid in 0.42% Potassium phosphate, 0.87% Sodium chloride, pH 7.3, 30% glycerol, and 0.09% (W/V) sodium azide.
Storage	Store at -20 °C.Stable for 12 months from date of receipt

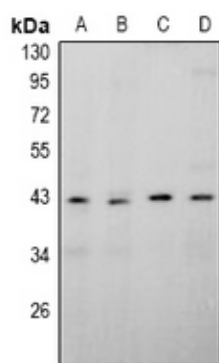
Protein Information

Name	APOBEC4
Synonyms	C1orf169
Function	Putative C to U editing enzyme whose physiological substrate is not yet known.
Tissue Location	Predominantly expressed in testis.

Background

KLH-conjugated synthetic peptide encompassing a sequence within the C-term region of human APOBEC4. The exact sequence is proprietary.

Images



Western blot analysis of APOBEC4 expression in rat testis (A), mouse testis (B), MCF7 (C), PC3 (D) whole cell lysates.

Please note: All products are 'FOR RESEARCH USE ONLY. NOT FOR USE IN DIAGNOSTIC OR THERAPEUTIC PROCEDURES'.