

Anti-PDXDC1 Antibody

Rabbit polyclonal antibody to PDXDC1

Catalog # AP60985

Product Information

Application	WB, IHC
Primary Accession	Q6P996
Reactivity	Human
Host	Rabbit
Clonality	Polyclonal
Calculated MW	86707

Additional Information

Gene ID	23042
Other Names	KIAA0251; Pyridoxal-dependent decarboxylase domain-containing protein 1
Target/Specificity	Recognizes endogenous levels of PDXDC1 protein.
Dilution	WB~~WB (1/500 - 1/1000), IHC (1/50 - 1/100) IHC~~WB (1/500 - 1/1000), IHC (1/50 - 1/100)
Format	Liquid in 0.42% Potassium phosphate, 0.87% Sodium chloride, pH 7.3, 30% glycerol, and 0.09% (W/V) sodium azide.
Storage	Store at -20 °C.Stable for 12 months from date of receipt

Protein Information

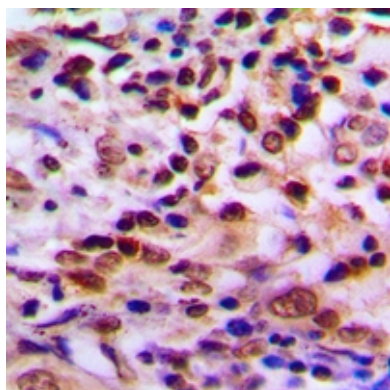
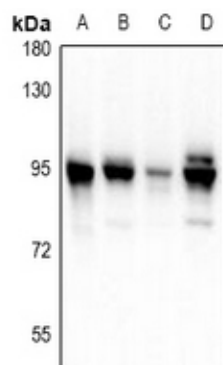
Name	PDXDC1
Synonyms	KIAA0251

Background

KLH-conjugated synthetic peptide encompassing a sequence within the C-term region of human PDXDC1. The exact sequence is proprietary.

Images

Western blot analysis of PDXDC1 expression in BV2 (A), PMVEC (B), A549 (C), Hela (D) whole cell lysates.



Immunohistochemical analysis of PDXDC1 staining in human lung cancer formalin fixed paraffin embedded tissue section. The section was pre-treated using heat mediated antigen retrieval with sodium citrate buffer (pH 6.0). The section was then incubated with the antibody at room temperature and detected using an HRP conjugated compact polymer system. DAB was used as the chromogen. The section was then counterstained with haematoxylin and mounted with DPX.

Please note: All products are 'FOR RESEARCH USE ONLY. NOT FOR USE IN DIAGNOSTIC OR THERAPEUTIC PROCEDURES'.