

Anti-RAB18 Antibody

Rabbit polyclonal antibody to RAB18

Catalog # AP60987

Product Information

Application	WB
Primary Accession	Q9NP72
Other Accession	P35293
Reactivity	Human, Mouse
Host	Rabbit
Clonality	Polyclonal
Calculated MW	22977

Additional Information

Gene ID	22931
Other Names	Ras-related protein Rab-18
Target/Specificity	Recognizes endogenous levels of RAB18 protein.
Dilution	WB~~WB (1/500 - 1/1000)
Format	Liquid in 0.42% Potassium phosphate, 0.87% Sodium chloride, pH 7.3, 30% glycerol, and 0.09% (W/V) sodium azide.
Storage	Store at -20 °C.Stable for 12 months from date of receipt

Protein Information

Name	RAB18 (HGNC:14244)
Function	The small GTPases Rab are key regulators of intracellular membrane trafficking, from the formation of transport vesicles to their fusion with membranes (PubMed: 24891604 , PubMed: 30970241). Rabs cycle between an inactive GDP-bound form and an active GTP-bound form that is able to recruit to membranes different sets of downstream effectors directly responsible for vesicle formation, movement, tethering and fusion (PubMed: 24891604 , PubMed: 30970241). RAB18 is required for the localization of ZFYVE1 to lipid droplets and for its function in mediating the formation of endoplasmic reticulum-lipid droplets (ER-LD) contacts (PubMed: 30970241). Also required for maintaining endoplasmic reticulum structure (PubMed: 24891604). Plays a role in apical endocytosis/recycling (By similarity). Plays a key role in eye and brain development and neurodegeneration (PubMed: 21473985).
Cellular Location	Endoplasmic reticulum membrane. Golgi apparatus, cis-Golgi network membrane Lipid droplet. Apical cell membrane

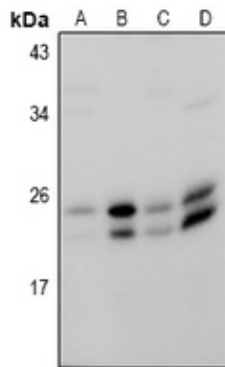
{ECO:0000250|UniProtKB:P35293}. Note=Localized to the ER membrane as well as to the cis-Golgi in fibroblasts.

Tissue Location Ubiquitous.

Background

KLH-conjugated synthetic peptide encompassing a sequence within the center region of human RAB18. The exact sequence is proprietary.

Images



Western blot analysis of RAB18 expression in A549 (A), HeLa (B), BV2 (C), C6 (D) whole cell lysates.

Please note: All products are 'FOR RESEARCH USE ONLY. NOT FOR USE IN DIAGNOSTIC OR THERAPEUTIC PROCEDURES'.