

Anti-RAB1B Antibody

Rabbit polyclonal antibody to RAB1B

Catalog # AP60988

Product Information

Application	WB
Primary Accession	Q9H0U4
Other Accession	Q9D1G1
Reactivity	Human, Mouse
Host	Rabbit
Clonality	Polyclonal
Calculated MW	22171

Additional Information

Gene ID	81876
Other Names	Ras-related protein Rab-1B
Target/Specificity	Recognizes endogenous levels of RAB1B protein.
Dilution	WB~~WB (1/500 - 1/1000)
Format	Liquid in 0.42% Potassium phosphate, 0.87% Sodium chloride, pH 7.3, 30% glycerol, and 0.09% (W/V) sodium azide.
Storage	Store at -20 °C.Stable for 12 months from date of receipt

Protein Information

Name	RAB1B (HGNC:18370)
Function	<p>The small GTPases Rab are key regulators of intracellular membrane trafficking, from the formation of transport vesicles to their fusion with membranes (PubMed:20545908, PubMed:9437002, PubMed:23236136). Rabs cycle between an inactive GDP-bound form and an active GTP-bound form that is able to recruit to membranes different set of downstream effectors directly responsible for vesicle formation, movement, tethering and fusion (PubMed:9437002). Plays a role in the initial events of the autophagic vacuole development which take place at specialized regions of the endoplasmic reticulum (PubMed:20545908). Regulates vesicular transport between the endoplasmic reticulum and successive Golgi compartments (By similarity). Required to modulate the compacted morphology of the Golgi (PubMed:26209634). Promotes the recruitment of lipid phosphatase MTMR6 to the endoplasmic reticulum- Golgi intermediate compartment (By similarity).</p>

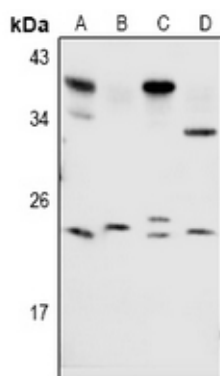
Cellular Location

Cytoplasm. Membrane; Lipid-anchor; Cytoplasmic side. Preautophagosomal structure membrane; Lipid-anchor; Cytoplasmic side. Cytoplasm, perinuclear region {ECO:0000250|UniProtKB:P10536}. Note=Targeted by REP1 to membranes of specific subcellular compartments including endoplasmic reticulum, Golgi apparatus, and intermediate vesicles between these two compartments (PubMed:11389151). In the GDP-form, colocalizes with GDI in the cytoplasm (PubMed:11389151). Co-localizes with MTMR6 to the endoplasmic reticulum-Golgi intermediate compartment and to the peri-Golgi region (By similarity). {ECO:0000250|UniProtKB:P10536, ECO:0000269|PubMed:11389151}

Background

KLH-conjugated synthetic peptide encompassing a sequence within the center region of human RAB1B. The exact sequence is proprietary.

Images



Western blot analysis of RAB1B expression in BV2 (A), C6 (B), A549 (C), HeLa (D) whole cell lysates.

Please note: All products are 'FOR RESEARCH USE ONLY. NOT FOR USE IN DIAGNOSTIC OR THERAPEUTIC PROCEDURES'.