

Anti-ARHGEF19 Antibody

Rabbit polyclonal antibody to ARHGEF19

Catalog # AP60991

Product Information

Application	WB, IHC
Primary Accession	Q8IW93
Other Accession	Q8BWA8
Reactivity	Human, Mouse, Rat
Host	Rabbit
Clonality	Polyclonal
Calculated MW	89197

Additional Information

Gene ID	128272
Other Names	Rho guanine nucleotide exchange factor 19; Ephexin-2
Target/Specificity	Recognizes endogenous levels of ARHGEF19 protein.
Dilution	WB~~WB (1/500 - 1/1000), IHC (1/50 - 1/100) IHC~~WB (1/500 - 1/1000), IHC (1/50 - 1/100)
Format	Liquid in 0.42% Potassium phosphate, 0.87% Sodium chloride, pH 7.3, 30% glycerol, and 0.09% (W/V) sodium azide.
Storage	Store at -20 °C.Stable for 12 months from date of receipt

Protein Information

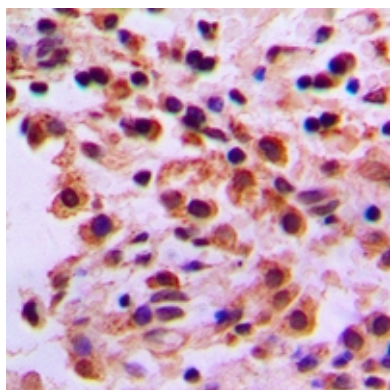
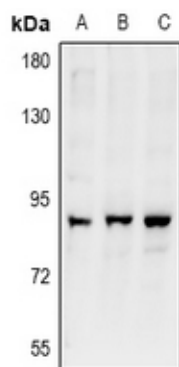
Name	ARHGEF19
Function	Acts as a guanine nucleotide exchange factor (GEF) for RhoA GTPase.

Background

KLH-conjugated synthetic peptide encompassing a sequence within the center region of human ARHGEF19. The exact sequence is proprietary.

Images

Western blot analysis of ARHGEF19 expression in CT26 (A), PC12 (B), Hela (C) whole cell lysates.



Immunohistochemical analysis of ARHGEF19 staining in human lung cancer formalin fixed paraffin embedded tissue section. The section was pre-treated using heat mediated antigen retrieval with sodium citrate buffer (pH 6.0). The section was then incubated with the antibody at room temperature and detected using an HRP conjugated compact polymer system. DAB was used as the chromogen. The section was then counterstained with haematoxylin and mounted with DPX.

Please note: All products are 'FOR RESEARCH USE ONLY. NOT FOR USE IN DIAGNOSTIC OR THERAPEUTIC PROCEDURES'.