

Anti-RCL1 Antibody

Rabbit polyclonal antibody to RCL1

Catalog # AP60992

Product Information

Application	WB
Primary Accession	Q9Y2P8
Other Accession	Q9JIT0
Reactivity	Human, Mouse, Monkey, Bovine
Host	Rabbit
Clonality	Polyclonal
Calculated MW	40843

Additional Information

Gene ID	10171
Other Names	RNAC; RPC2; RPCL1; RTC2; RNA 3'-terminal phosphate cyclase-like protein
Target/Specificity	KLH-conjugated synthetic peptide encompassing a sequence within the C-term region of human RCL1. The exact sequence is proprietary.
Dilution	WB~~WB (1/500 - 1/1000)
Format	Liquid in 0.42% Potassium phosphate, 0.87% Sodium chloride, pH 7.3, 30% glycerol, and 0.09% (W/V) sodium azide.
Storage	Store at -20 °C.Stable for 12 months from date of receipt

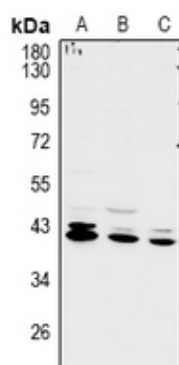
Protein Information

Name	RCL1 (HGNC:17687)
Synonyms	RNAC, RPC2, RPCL1, RTC2
Function	As part of the small subunit (SSU) processome, it plays a role in 40S-ribosomal-subunit biogenesis in the early pre-rRNA processing steps at sites A0, A1 and A2 that are required for proper maturation of the 18S RNA (By similarity). Activates BMS1 by promoting GDP/GTP exchange (By similarity). Does not have cyclase activity (By similarity).
Cellular Location	Nucleus, nucleolus

Background

KLH-conjugated synthetic peptide encompassing a sequence within the C-term region of human RCL1. The exact sequence is proprietary.

Images



Western blot analysis of RCL1 expression in LO2 (A), A549 (B), COS7 (C) whole cell lysates.

Please note: All products are 'FOR RESEARCH USE ONLY. NOT FOR USE IN DIAGNOSTIC OR THERAPEUTIC PROCEDURES'.