

Anti-SLY1 Antibody

Rabbit polyclonal antibody to SLY1
Catalog # AP60994

Product Information

Application	WB
Primary Accession	Q8WVM8
Other Accession	Q8BRF7
Reactivity	Human, Mouse, Rat
Host	Rabbit
Clonality	Polyclonal
Calculated MW	72380

Additional Information

Gene ID	23256
Other Names	C14orf163; KIAA0917; STXBP1L2; Sec1 family domain-containing protein 1; SLY1 homolog; Sly1p; Syntaxin-binding protein 1-like 2
Target/Specificity	Recognizes endogenous levels of SLY1 protein.
Dilution	WB~~WB (1/500 - 1/1000)
Format	Liquid in 0.42% Potassium phosphate, 0.87% Sodium chloride, pH 7.3, 30% glycerol, and 0.09% (W/V) sodium azide.
Storage	Store at -20 °C.Stable for 12 months from date of receipt

Protein Information

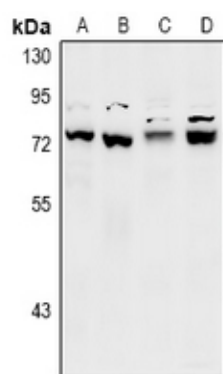
Name	SCFD1
Synonyms	C14orf163, KIAA0917, STXBP1L2
Function	Plays a role in SNARE-pin assembly and Golgi-to-ER retrograde transport via its interaction with COG4. Involved in vesicular transport between the endoplasmic reticulum and the Golgi (By similarity).
Cellular Location	Cytoplasm. Endoplasmic reticulum membrane; Peripheral membrane protein Golgi apparatus, Golgi stack membrane; Peripheral membrane protein

Background

KLH-conjugated synthetic peptide encompassing a sequence within the C-term region of human SLY1. The

exact sequence is proprietary.

Images



Western blot analysis of SLY1 expression in CT26 (A), PC12 (B), LO2 (C), HEK293T (D) whole cell lysates.

Please note: All products are 'FOR RESEARCH USE ONLY. NOT FOR USE IN DIAGNOSTIC OR THERAPEUTIC PROCEDURES'.