

Anti-PDIK1L Antibody

Rabbit polyclonal antibody to PDIK1L
Catalog # AP60996

Product Information

Application	WB, IHC
Primary Accession	Q8N165
Reactivity	Human, Monkey
Host	Rabbit
Clonality	Polyclonal
Calculated MW	38546

Additional Information

Gene ID	149420
Other Names	CLIK1L; Serine/threonine-protein kinase PDIK1L; PDLIM1-interacting kinase 1-like
Target/Specificity	Recognizes endogenous levels of PDIK1L protein.
Dilution	WB~~WB (1/500 - 1/1000), IHC (1/50 - 1/100) IHC~~WB (1/500 - 1/1000), IHC (1/50 - 1/100)
Format	Liquid in 0.42% Potassium phosphate, 0.87% Sodium chloride, pH 7.3, 30% glycerol, and 0.09% (W/V) sodium azide.
Storage	Store at -20 °C.Stable for 12 months from date of receipt

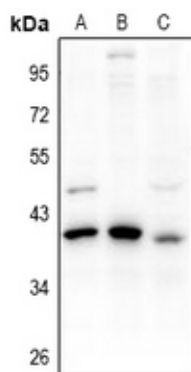
Protein Information

Name	PDIK1L
Synonyms	CLIK1L
Cellular Location	Nucleus.
Tissue Location	Expressed in liver, kidney, pancreas, spleen, thymus and prostate.

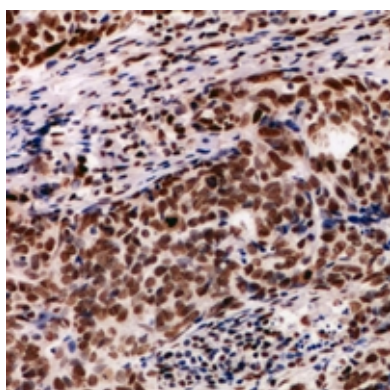
Background

KLH-conjugated synthetic peptide encompassing a sequence within the center region of human PDIK1L. The exact sequence is proprietary.

Images



Western blot analysis of PDIK1L expression in LO2 (A), HEK293T (B), COS7 (C) whole cell lysates.



Immunohistochemical analysis of PDIK1L staining in human breast cancer formalin fixed paraffin embedded tissue section. The section was pre-treated using heat mediated antigen retrieval with sodium citrate buffer (pH 6.0). The section was then incubated with the antibody at room temperature and detected using an HRP conjugated compact polymer system. DAB was used as the chromogen. The section was then counterstained with haematoxylin and mounted with DPX.

Please note: All products are 'FOR RESEARCH USE ONLY. NOT FOR USE IN DIAGNOSTIC OR THERAPEUTIC PROCEDURES'.