

# Anti-PPP2R2B Antibody

Rabbit polyclonal antibody to PPP2R2B

Catalog # AP61000

## Product Information

Application	WB
Primary Accession	<a href="#">Q00005</a>
Other Accession	<a href="#">Q6ZWR4</a>
Reactivity	Human, Mouse, Rat, Monkey, Pig, Bovine
Host	Rabbit
Clonality	Polyclonal
Calculated MW	51710

## Additional Information

Gene ID	5521
Other Names	Serine/threonine-protein phosphatase 2A 55 kDa regulatory subunit B beta isoform; PP2A subunit B isoform B55-beta; PP2A subunit B isoform PR55-beta; PP2A subunit B isoform R2-beta; PP2A subunit B isoform beta
Target/Specificity	KLH-conjugated synthetic peptide encompassing a sequence within the center region of human PPP2R2B. The exact sequence is proprietary.
Dilution	WB~~WB (1/500 - 1/1000)
Format	Liquid in 0.42% Potassium phosphate, 0.87% Sodium chloride, pH 7.3, 30% glycerol, and 0.09% (W/V) sodium azide.
Storage	Store at -20 °C.Stable for 12 months from date of receipt

## Protein Information

Name	PPP2R2B
Function	The B regulatory subunit might modulate substrate selectivity and catalytic activity, and might also direct the localization of the catalytic enzyme to a particular subcellular compartment. Within the PP2A holoenzyme complex, isoform 2 is required to promote proapoptotic activity (By similarity). Isoform 2 regulates neuronal survival through the mitochondrial fission and fusion balance (By similarity).
Cellular Location	[Isoform 1]: Cytoplasm. Cytoplasm, cytoskeleton. Membrane
Tissue Location	Brain.

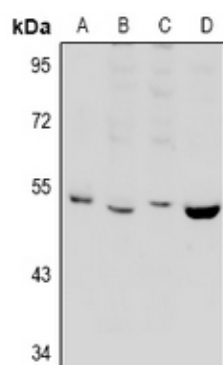
## Background

---

KLH-conjugated synthetic peptide encompassing a sequence within the center region of human PPP2R2B. The exact sequence is proprietary.

## Images

---



Western blot analysis of PPP2R2B expression in rat brain (A), HeLa (B), C6 (C), mouse brain (D) whole cell lysates.

Please note: All products are 'FOR RESEARCH USE ONLY. NOT FOR USE IN DIAGNOSTIC OR THERAPEUTIC PROCEDURES'.