

# Anti-SH2D5 Antibody

Rabbit polyclonal antibody to SH2D5

Catalog # AP61002

## Product Information

---

<b>Application</b>	WB
<b>Primary Accession</b>	<a href="#">Q6ZV89</a>
<b>Other Accession</b>	<a href="#">Q8JZW5</a>
<b>Reactivity</b>	Human, Mouse, Rat
<b>Host</b>	Rabbit
<b>Clonality</b>	Polyclonal
<b>Calculated MW</b>	46797

## Additional Information

---

<b>Gene ID</b>	400745
<b>Other Names</b>	SH2 domain-containing protein 5
<b>Target/Specificity</b>	Recognizes endogenous levels of SH2D5 protein.
<b>Dilution</b>	WB~~WB (1/500 - 1/1000)
<b>Format</b>	Liquid in 0.42% Potassium phosphate, 0.87% Sodium chloride, pH 7.3, 30% glycerol, and 0.09% (W/V) sodium azide.
<b>Storage</b>	Store at -20 °C.Stable for 12 months from date of receipt

## Protein Information

---

<b>Name</b>	SH2D5 ( <a href="#">HGNC:28819</a> )
<b>Function</b>	May be involved in synaptic plasticity regulation through the control of Rac-GTP levels.
<b>Cellular Location</b>	Postsynaptic density {ECO:0000250 UniProtKB:Q8JZW5}

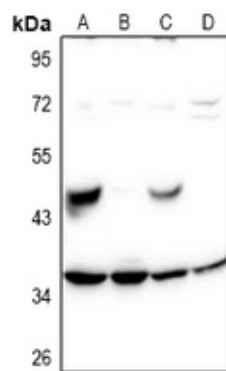
## Background

---

KLH-conjugated synthetic peptide encompassing a sequence within the C-term region of human SH2D5. The exact sequence is proprietary.

## Images

---



Western blot analysis of SH2D5 expression in Hela (A), A549 (B), PC12 (C), AML12 (D) whole cell lysates.

Please note: All products are 'FOR RESEARCH USE ONLY. NOT FOR USE IN DIAGNOSTIC OR THERAPEUTIC PROCEDURES'.