

Anti-CD6 Antibody

Rabbit polyclonal antibody to CD6

Catalog # AP61005

Product Information

Application	WB
Primary Accession	P30203
Other Accession	Q61003
Reactivity	Human, Mouse, Rat
Host	Rabbit
Clonality	Polyclonal
Calculated MW	71801

Additional Information

Gene ID	923
Other Names	T-cell differentiation antigen CD6; T12; TP120; CD6
Target/Specificity	KLH-conjugated synthetic peptide encompassing a sequence within the center region of human CD6. The exact sequence is proprietary.
Dilution	WB~~WB (1/500 - 1/1000)
Format	Liquid in 0.42% Potassium phosphate, 0.87% Sodium chloride, pH 7.3, 30% glycerol, and 0.09% (W/V) sodium azide.
Storage	Store at -20 °C.Stable for 12 months from date of receipt

Protein Information

Name	CD6 (HGNC:1691)
Function	Cell adhesion molecule that mediates cell-cell contacts and regulates T-cell responses via its interaction with ALCAM/CD166 (PubMed: 15048703 , PubMed: 15294938 , PubMed: 16352806 , PubMed: 16914752 , PubMed: 24584089 , PubMed: 24945728). Contributes to signaling cascades triggered by activation of the TCR/CD3 complex (PubMed: 24584089). Functions as a costimulatory molecule; promotes T-cell activation and proliferation (PubMed: 15294938 , PubMed: 16352806 , PubMed: 16914752). Contributes to the formation and maturation of the immunological synapse (PubMed: 15294938 , PubMed: 16352806). Functions as a calcium- dependent pattern receptor that binds and aggregates both Gram-positive and Gram-negative bacteria. Binds both lipopolysaccharide (LPS) from Gram-negative bacteria and lipoteichoic acid from Gram-positive bacteria (PubMed: 17601777). LPS binding leads to the activation of signaling cascades and down-stream MAP kinases (PubMed: 17601777). Mediates activation of

the inflammatory response and the secretion of pro-inflammatory cytokines in response to LPS (PubMed:[17601777](#)).

Cellular Location

Cell membrane; Single-pass type I membrane protein. Note=Detected at the immunological synapse, i.e, at the contact zone between antigen-presenting dendritic cells and T-cells (PubMed:15294938, PubMed:16352806). Colocalizes with the TCR/CD3 complex at the immunological synapse (PubMed:15294938)

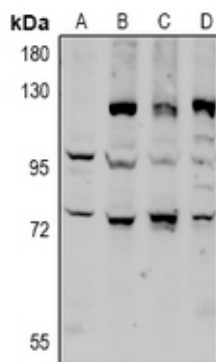
Tissue Location

Detected on thymocytes (PubMed:15294938). Detected on peripheral blood T-cells (PubMed:15048703, PubMed:16352806) Detected on natural killer (NK) cells (PubMed:16352806). Soluble CD6 is detected in blood serum (at protein level) (PubMed:17601777). Detected in spleen, thymus, appendix, lymph node and peripheral blood leukocytes (PubMed:9013954). Expressed by thymocytes, mature T-cells, a subset of B-cells known as B-1 cells, and by some cells in the brain

Background

KLH-conjugated synthetic peptide encompassing a sequence within the center region of human CD6. The exact sequence is proprietary.

Images



Western blot analysis of CD6 expression in Jurkat (A), MCF7 (B), H9C2 (C), AML12 (D) whole cell lysates.

Please note: All products are 'FOR RESEARCH USE ONLY. NOT FOR USE IN DIAGNOSTIC OR THERAPEUTIC PROCEDURES'.