

Anti-VANGL1 Antibody

Rabbit polyclonal antibody to VANGL1

Catalog # AP61010

Product Information

Application	WB
Primary Accession	Q8TAA9
Other Accession	Q80Z96
Reactivity	Human, Mouse, Rat
Host	Rabbit
Clonality	Polyclonal
Calculated MW	59975

Additional Information

Gene ID	81839
Other Names	STB2; Vang-like protein 1; Loop-tail protein 2 homolog; LPP2; Strabismus 2; Van Gogh-like protein 1
Target/Specificity	KLH-conjugated synthetic peptide encompassing a sequence within the center region of human VANGL1. The exact sequence is proprietary.
Dilution	WB~~WB (1/500 - 1/1000)
Format	Liquid in 0.42% Potassium phosphate, 0.87% Sodium chloride, pH 7.3, 30% glycerol, and 0.09% (W/V) sodium azide.
Storage	Store at -20 °C.Stable for 12 months from date of receipt

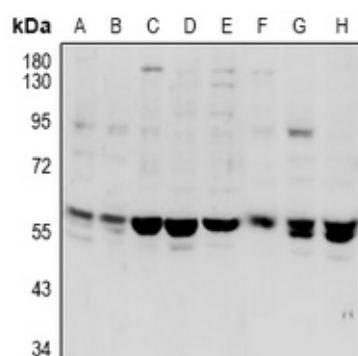
Protein Information

Name	VANGL1
Synonyms	STB2
Cellular Location	Cell membrane; Multi-pass membrane protein
Tissue Location	According to PubMed:11956595, ubiquitously expressed. According to PubMed:12011995, expressed specifically in testis and ovary.

Background

KLH-conjugated synthetic peptide encompassing a sequence within the center region of human VANGL1. The exact sequence is proprietary.

Images



Western blot analysis of VANG1 expression in PC12 (A), CT26 (B), MCF7 (C), A549 (D), SKOVCA3 (E), A2780 (F), mouse testis (G), rat testis (H) whole cell lysates.

Please note: All products are 'FOR RESEARCH USE ONLY. NOT FOR USE IN DIAGNOSTIC OR THERAPEUTIC PROCEDURES'.