

Anti-ZNT8 Antibody

Rabbit polyclonal antibody to ZNT8

Catalog # AP61014

Product Information

Application	WB
Primary Accession	Q8IWU4
Reactivity	Human, Rat
Host	Rabbit
Clonality	Polyclonal
Calculated MW	40755

Additional Information

Gene ID	169026
Other Names	ZNT8; Zinc transporter 8; ZnT-8; Solute carrier family 30 member 8
Target/Specificity	Recognizes endogenous levels of ZNT8 protein.
Dilution	WB~~WB (1/500 - 1/1000)
Format	Liquid in 0.42% Potassium phosphate, 0.87% Sodium chloride, pH 7.3, 30% glycerol, and 0.09% (W/V) sodium azide.
Storage	Store at -20 °C.Stable for 12 months from date of receipt

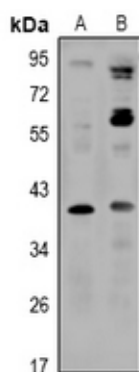
Protein Information

Name	SLC30A8 (HGNC:20303)
Function	Proton-coupled zinc ion antiporter mediating the entry of zinc into the lumen of pancreatic beta cell secretory granules, thereby regulating insulin secretion.
Cellular Location	Cytoplasmic vesicle, secretory vesicle membrane; Multi-pass membrane protein. Cell membrane; Multi-pass membrane protein. Note=Associated with insulin and glucagon secretory granules.
Tissue Location	In the endocrine pancreas, expressed in insulin- producing beta cells. Expressed at relatively high levels in subcutaneous fat tissue from lean persons; much lower levels in visceral fat, whether from lean or obese individuals, and in subcutaneous fat tissue from obese individuals. Expressed in peripheral blood mononuclear cells, including T-cells and B-cells, with great variation among individuals ranging from negative to strongly positive

Background

KLH-conjugated synthetic peptide encompassing a sequence within the center region of human ZNT8. The exact sequence is proprietary.

Images



Western blot analysis of ZNT8 expression in H9C2 (A), K562 (B) whole cell lysates.

Please note: All products are 'FOR RESEARCH USE ONLY. NOT FOR USE IN DIAGNOSTIC OR THERAPEUTIC PROCEDURES'.