

# Anti-TRF3 Antibody

Rabbit polyclonal antibody to TRF3

Catalog # AP61016

## Product Information

---

<b>Application</b>	WB, IHC
<b>Primary Accession</b>	<a href="#">Q6SJ96</a>
<b>Other Accession</b>	<a href="#">Q6SJ95</a>
<b>Reactivity</b>	Human, Mouse, Rat
<b>Host</b>	Rabbit
<b>Clonality</b>	Polyclonal
<b>Calculated MW</b>	38035

## Additional Information

---

<b>Gene ID</b>	387332
<b>Other Names</b>	TBP2; TRF3; TATA box-binding protein-like protein 2; TBP-like protein 2; TATA box-binding protein-related factor 3; TBP-related factor 3
<b>Target/Specificity</b>	Recognizes endogenous levels of TRF3 protein.
<b>Dilution</b>	WB~~WB (1/500 - 1/1000), IHC (1/50 - 1/100) IHC~~WB (1/500 - 1/1000), IHC (1/50 - 1/100)
<b>Format</b>	Liquid in 0.42% Potassium phosphate, 0.87% Sodium chloride, pH 7.3, 30% glycerol, and 0.09% (W/V) sodium azide.
<b>Storage</b>	Store at -20 °C.Stable for 12 months from date of receipt

## Protein Information

---

<b>Name</b>	TBPL2 {ECO:0000312   EMBL:AAI17186.1, ECO:0000312   HGNC:HGNC:19841}
<b>Function</b>	Transcription factor required in complex with TAF3 for the differentiation of myoblasts into myocytes. The complex replaces TFIID at specific promoters at an early stage in the differentiation process (By similarity).
<b>Cellular Location</b>	Cytoplasm. Nucleus. Note=Present in the cytoplasm during cytokinesis.
<b>Tissue Location</b>	Ubiquitously expressed in all tissues examined with highest levels in heart, lung, ovary, spleen and testes

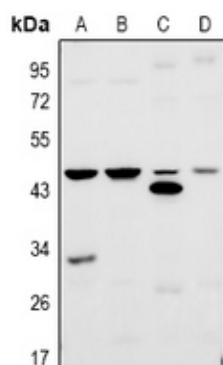
## Background

---

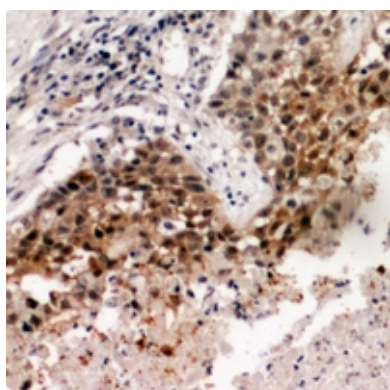
KLH-conjugated synthetic peptide encompassing a sequence within the center region of human TRF3. The exact sequence is proprietary.

## Images

---



Western blot analysis of TRF3 expression in A2780 (A), H1792 (B), mouse testis (C), rat testis (D) whole cell lysates.



Immunohistochemical analysis of TRF3 staining in human lung cancer formalin fixed paraffin embedded tissue section. The section was pre-treated using heat mediated antigen retrieval with sodium citrate buffer (pH 6.0). The section was then incubated with the antibody at room temperature and detected using an HRP conjugated compact polymer system. DAB was used as the chromogen. The section was then counterstained with haematoxylin and mounted with DPX.

Please note: All products are 'FOR RESEARCH USE ONLY. NOT FOR USE IN DIAGNOSTIC OR THERAPEUTIC PROCEDURES'.