

Anti-ZNT9 Antibody

Rabbit polyclonal antibody to ZNT9

Catalog # AP61021

Product Information

Application	WB
Primary Accession	Q6PML9
Reactivity	Human, Mouse
Host	Rabbit
Clonality	Polyclonal
Calculated MW	63515

Additional Information

Gene ID	10463
Other Names	Zinc transporter 9; SLC30A9; ZnT-9; Human embryonic lung protein; HuEL; Solute carrier family 30 member 9; SLC30A9; C4orf1; HUEL
Target/Specificity	KLH-conjugated synthetic peptide encompassing a sequence within the center region of human ZNT9. The exact sequence is proprietary.
Dilution	WB~~WB (1/500 - 1/1000)
Format	Liquid in 0.42% Potassium phosphate, 0.87% Sodium chloride, pH 7.3, 30% glycerol, and 0.09% (W/V) sodium azide.
Storage	Store at -20 °C.Stable for 12 months from date of receipt

Protein Information

Name	SLC30A9 (HGNC:1329)
Synonyms	C4orf1, HUEL
Function	Mitochondrial proton-coupled zinc ion antiporter mediating the export of zinc from the mitochondria and involved in zinc homeostasis, zinc mobilization as well as mitochondrial morphology and health (PubMed: 28334855 , PubMed: 34397090 , PubMed: 34433664 , PubMed: 35614220). In nucleus, functions as a secondary coactivator for nuclear receptors by cooperating with p160 coactivators subtypes. Plays a role in transcriptional activation of Wnt-responsive genes (By similarity).
Cellular Location	Mitochondrion membrane; Multi-pass membrane protein. Nucleus Endoplasmic reticulum. Note=Partial co- localization with endoplasmic reticulum (PubMed:28334855). Linked to mitochondrial ribosomes (PubMed:35614220)

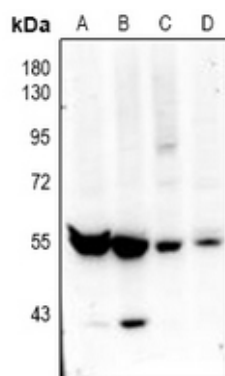
Tissue Location

Ubiquitously expressed in fetal and adult tissues and cancer cell lines.

Background

KLH-conjugated synthetic peptide encompassing a sequence within the center region of human ZNT9. The exact sequence is proprietary.

Images



Western blot analysis of ZNT9 expression in CT26 (A), C6 (B), HEK293T (C), HepG2 (D) whole cell lysates.

Please note: All products are 'FOR RESEARCH USE ONLY. NOT FOR USE IN DIAGNOSTIC OR THERAPEUTIC PROCEDURES'.