

# Anti-HSPBAP1 Antibody

Rabbit polyclonal antibody to HSPBAP1

Catalog # AP61022

## Product Information

---

Application	WB
Primary Accession	<a href="#">Q96EW2</a>
Other Accession	<a href="#">Q8BK58</a>
Reactivity	Human, Mouse, Rat
Host	Rabbit
Clonality	Polyclonal
Calculated MW	55167

## Additional Information

---

Gene ID	79663
Other Names	PASS1; HSPB1-associated protein 1; 27 kDa heat shock protein-associated protein 1; Protein associated with small stress protein 1
Target/Specificity	KLH-conjugated synthetic peptide encompassing a sequence within the center region of human HSPBAP1. The exact sequence is proprietary.
Dilution	WB~~WB (1/500 - 1/1000)
Format	Liquid in 0.42% Potassium phosphate, 0.87% Sodium chloride, pH 7.3, 30% glycerol, and 0.09% (W/V) sodium azide.
Storage	Store at -20 °C.Stable for 12 months from date of receipt

## Protein Information

---

Name	HSPBAP1
Synonyms	PASS1
Function	May play a role in cellular stress response.
Cellular Location	Cytoplasm.
Tissue Location	Widely expressed..

## Background

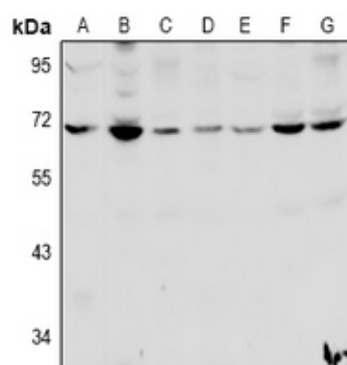
---

KLH-conjugated synthetic peptide encompassing a sequence within the center region of human HSPBAP1.

The exact sequence is proprietary.

## Images

---



Western blot analysis of HSPBAP1 expression in CT26 (A), SGC7901 (B), HCT116 (C), C6 (D), PC12 (E), MCF7 (F), A549 (G) whole cell lysates.

Please note: All products are 'FOR RESEARCH USE ONLY. NOT FOR USE IN DIAGNOSTIC OR THERAPEUTIC PROCEDURES'.