

Anti-CD272 Antibody

Rabbit polyclonal antibody to CD272

Catalog # AP61027

Product Information

Application	WB
Primary Accession	Q7Z6A9
Other Accession	Q7TSA3
Reactivity	Human, Mouse, Rat
Host	Rabbit
Clonality	Polyclonal
Calculated MW	32834

Additional Information

Gene ID	151888
Other Names	B- and T-lymphocyte attenuator; B- and T-lymphocyte-associated protein; CD272
Target/Specificity	KLH-conjugated synthetic peptide encompassing a sequence within the center region of human CD272. The exact sequence is proprietary.
Dilution	WB~~WB (1/500 - 1/1000)
Format	Liquid in 0.42% Potassium phosphate, 0.87% Sodium chloride, pH 7.3, 30% glycerol, and 0.09% (W/V) sodium azide.
Storage	Store at -20 °C.Stable for 12 months from date of receipt

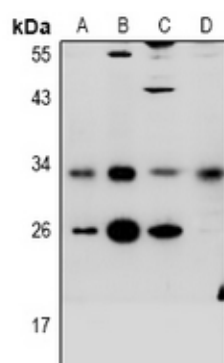
Protein Information

Name	BTLA {ECO:0000303 PubMed:12796776, ECO:0000312 HGNC:HGNC:21087}
Function	Inhibitory receptor on lymphocytes that negatively regulates antigen receptor signaling via PTPN6/SHP-1 and PTPN11/SHP-2 (PubMed: 12796776 , PubMed: 14652006 , PubMed: 15568026 , PubMed: 18193050). May interact in cis (on the same cell) or in trans (on other cells) with TNFRSF14 (PubMed: 19915044). In cis interactions, appears to play an immune regulatory role inhibiting in trans interactions in naive T cells to maintain a resting state. In trans interactions, can predominate during adaptive immune response to provide survival signals to effector T cells (PubMed: 19915044).
Cellular Location	Cell membrane; Single-pass type I membrane protein

Background

KLH-conjugated synthetic peptide encompassing a sequence within the center region of human CD272. The exact sequence is proprietary.

Images



Western blot analysis of CD272 expression in HCT116 (A), LO2 (B), C6 (C), CT26 (D) whole cell lysates.

Please note: All products are 'FOR RESEARCH USE ONLY. NOT FOR USE IN DIAGNOSTIC OR THERAPEUTIC PROCEDURES'.