

Anti-Desmoglein 1 Antibody

Rabbit polyclonal antibody to Desmoglein 1
Catalog # AP61028

Product Information

Application	WB
Primary Accession	Q02413
Reactivity	Human, Mouse, Rat
Host	Rabbit
Clonality	Polyclonal
Calculated MW	113748

Additional Information

Gene ID	1828
Other Names	CDHF4; Desmoglein-1; Cadherin family member 4; Desmosomal glycoprotein 1; DG1; DGI; Pemphigus foliaceus antigen
Target/Specificity	Recognizes endogenous levels of Desmoglein 1 protein.
Dilution	WB~~WB (1/500 - 1/1000)
Format	Liquid in 0.42% Potassium phosphate, 0.87% Sodium chloride, pH 7.3, 30% glycerol, and 0.09% (W/V) sodium azide.
Storage	Store at -20 °C.Stable for 12 months from date of receipt

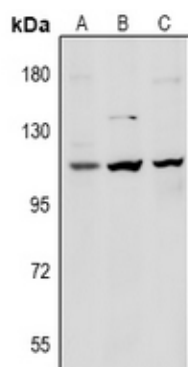
Protein Information

Name	DSG1
Synonyms	CDHF4
Function	Component of intercellular desmosome junctions (PubMed: 34368962). Involved in the interaction of plaque proteins and intermediate filaments mediating cell-cell adhesion (PubMed: 19717567).
Cellular Location	Cell membrane; Single-pass type I membrane protein {ECO:0000250 UniProtKB:Q7TSF1} Cell junction, desmosome. Cytoplasm. Nucleus
Tissue Location	Expressed in all suprabasal layers of the epidermis, with the highest expression seen in the granular layer (at protein level).

Background

KLH-conjugated synthetic peptide encompassing a sequence within the center region of human Desmoglein 1. The exact sequence is proprietary.

Images



Western blot analysis of Desmoglein 1 expression in Beas2B (A), H9C2 (B), MEF (C) whole cell lysates.

Please note: All products are 'FOR RESEARCH USE ONLY. NOT FOR USE IN DIAGNOSTIC OR THERAPEUTIC PROCEDURES'.