

# Anti-DPP7 Antibody

Rabbit polyclonal antibody to DPP7

Catalog # AP61032

## Product Information

---

<b>Application</b>	WB, IHC
<b>Primary Accession</b>	<a href="#">Q9UHL4</a>
<b>Reactivity</b>	Human
<b>Host</b>	Rabbit
<b>Clonality</b>	Polyclonal
<b>Calculated MW</b>	54341

## Additional Information

---

<b>Gene ID</b>	29952
<b>Other Names</b>	DPP2; QPP; Dipeptidyl peptidase 2; Dipeptidyl aminopeptidase II; Dipeptidyl peptidase 7; Dipeptidyl peptidase II; DPP II; Quiescent cell proline dipeptidase
<b>Target/Specificity</b>	Recognizes endogenous levels of DPP7 protein.
<b>Dilution</b>	WB~~WB (1/500 - 1/1000), IHC (1/50 - 1/100) IHC~~WB (1/500 - 1/1000), IHC (1/50 - 1/100)
<b>Format</b>	Liquid in 0.42% Potassium phosphate, 0.87% Sodium chloride, pH 7.3, 30% glycerol, and 0.09% (W/V) sodium azide.
<b>Storage</b>	Store at -20 °C.Stable for 12 months from date of receipt

## Protein Information

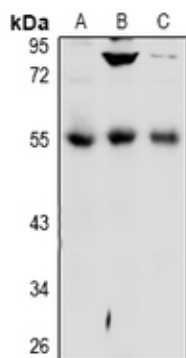
---

<b>Name</b>	DPP7
<b>Synonyms</b>	DPP2, QPP
<b>Function</b>	Plays an important role in the degradation of some oligopeptides.
<b>Cellular Location</b>	Lysosome. Cytoplasmic vesicle. Secreted
<b>Tissue Location</b>	Detected in seminal plasma (at protein level).

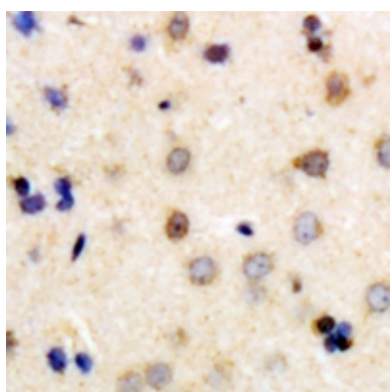
## Background

---

KLH-conjugated synthetic peptide encompassing a sequence within the C-term region of human DPP7. The exact sequence is proprietary.



Western blot analysis of DPP7 expression in MCF7 (A), A549 (B), U87MG (C) whole cell lysates.



Immunohistochemical analysis of DPP7 staining in human brain formalin fixed paraffin embedded tissue section. The section was pre-treated using heat mediated antigen retrieval with sodium citrate buffer (pH 6.0). The section was then incubated with the antibody at room temperature and detected using an HRP conjugated compact polymer system. DAB was used as the chromogen. The section was then counterstained with haematoxylin and mounted with DPX.

Please note: All products are 'FOR RESEARCH USE ONLY. NOT FOR USE IN DIAGNOSTIC OR THERAPEUTIC PROCEDURES'.