

# Anti-Factor II Antibody

Rabbit polyclonal antibody to Factor II  
Catalog # AP61033

## Product Information

Application	WB, IHC
Primary Accession	<a href="#">P00734</a>
Other Accession	<a href="#">P19221</a>
Reactivity	Human, Mouse, Rat
Host	Rabbit
Clonality	Polyclonal
Calculated MW	70037

## Additional Information

Gene ID	2147
Other Names	Prothrombin; Coagulation factor II
Target/Specificity	Recognizes endogenous levels of Factor II protein.
Dilution	WB~~WB (1/500 - 1/1000), IHC (1/50 - 1/100) IHC~~WB (1/500 - 1/1000), IHC (1/50 - 1/100)
Format	Liquid in 0.42% Potassium phosphate, 0.87% Sodium chloride, pH 7.3, 30% glycerol, and 0.09% (W/V) sodium azide.
Storage	Store at -20 °C.Stable for 12 months from date of receipt

## Protein Information

Name	F2
Function	Thrombin, which cleaves bonds after Arg and Lys, converts fibrinogen to fibrin and activates factors V, VII, VIII, XIII, and, in complex with thrombomodulin, protein C. Functions in blood homeostasis, inflammation and wound healing. Activates coagulation factor XI (F11); activation is promoted by the contact with negatively charged surfaces (PubMed: <a href="#">2019570</a> , PubMed: <a href="#">21976677</a> ). Triggers the production of pro- inflammatory cytokines, such as MCP-1/CCL2 and IL8/CXCL8, in endothelial cells (PubMed: <a href="#">30568593</a> , PubMed: <a href="#">9780208</a> ).
Cellular Location	Secreted, extracellular space.
Tissue Location	Expressed by the liver and secreted in plasma.

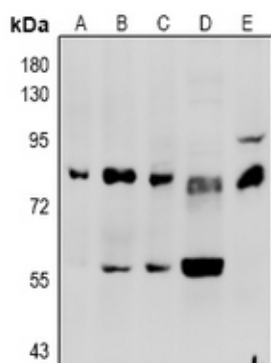
## Background

---

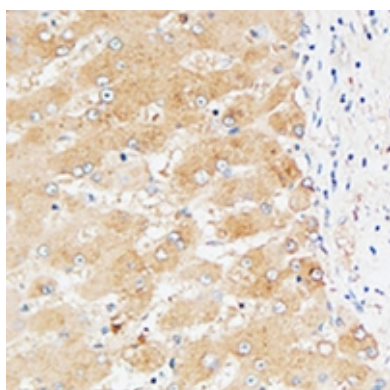
KLH-conjugated synthetic peptide encompassing a sequence within the center region of human Factor II. The exact sequence is proprietary.

## Images

---



Western blot analysis of Factor II expression in K562 (A), A549 (B), LO2 (C), rat liver (D), mouse liver (E) whole cell lysates.



Immunohistochemical analysis of Factor II staining in human liver formalin fixed paraffin embedded tissue section. The section was pre-treated using heat mediated antigen retrieval with sodium citrate buffer (pH 6.0). The section was then incubated with the antibody at room temperature and detected using an HRP conjugated compact polymer system. DAB was used as the chromogen. The section was then counterstained with haematoxylin and mounted with DPX.

Please note: All products are 'FOR RESEARCH USE ONLY. NOT FOR USE IN DIAGNOSTIC OR THERAPEUTIC PROCEDURES'.