

Anti-Prolyl Endopeptidase Antibody

Rabbit polyclonal antibody to Prolyl Endopeptidase

Catalog # AP61037

Product Information

Application	WB, IHC
Primary Accession	Q8N6D4
Reactivity	Human
Host	Rabbit
Clonality	Polyclonal

Additional Information

Other Names	Prolyl endopeptidase; PREP; PE; Post-proline cleaving enzyme; PEP
Target/Specificity	Recognizes endogenous levels of Prolyl Endopeptidase protein.
Dilution	WB~~WB (1/500 - 1/1000), IHC (1/50 - 1/100) IHC~~WB (1/500 - 1/1000), IHC (1/50 - 1/100)
Format	Liquid in 0.42% Potassium phosphate, 0.87% Sodium chloride, pH 7.3, 30% glycerol, and 0.09% (W/V) sodium azide.
Storage	Store at -20 °C.Stable for 12 months from date of receipt

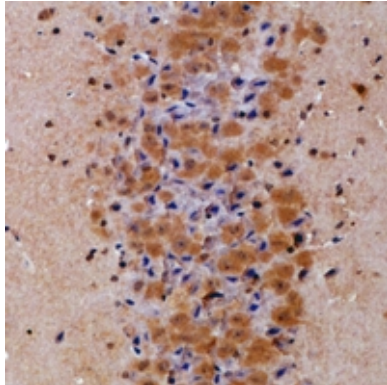
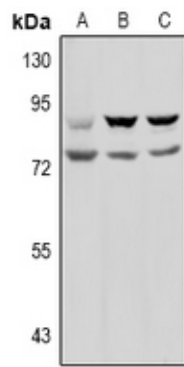
Protein Information

Background

KLH-conjugated synthetic peptide encompassing a sequence within the N-term region of human Prolyl Endopeptidase. The exact sequence is proprietary.

Images

Western blot analysis of Prolyl Endopeptidase expression in HEK293T (A), U87MG (B), MCF7 (C) whole cell lysates.



Immunohistochemical analysis of Prolyl Endopeptidase staining in mouse brain formalin fixed paraffin embedded tissue section. The section was pre-treated using heat mediated antigen retrieval with sodium citrate buffer (pH 6.0). The section was then incubated with the antibody at room temperature and detected using an HRP conjugated compact polymer system. DAB was used as the chromogen. The section was then counterstained with haematoxylin and mounted with DPX.

Please note: All products are 'FOR RESEARCH USE ONLY. NOT FOR USE IN DIAGNOSTIC OR THERAPEUTIC PROCEDURES'.