

Anti-Acrosin Antibody

Rabbit polyclonal antibody to Acrosin
Catalog # AP61039

Product Information

Application	WB
Primary Accession	P10323
Reactivity	Human
Host	Rabbit
Clonality	Polyclonal
Calculated MW	45847

Additional Information

Gene ID	49
Other Names	ACRS; Acrosin
Target/Specificity	KLH-conjugated synthetic peptide encompassing a sequence within the N-term region of human Acrosin. The exact sequence is proprietary.
Dilution	WB~~WB (1/500 - 1/1000)
Format	Liquid in 0.42% Potassium phosphate, 0.87% Sodium chloride, pH 7.3, 30% glycerol, and 0.09% (W/V) sodium azide.
Storage	Store at -20 °C.Stable for 12 months from date of receipt

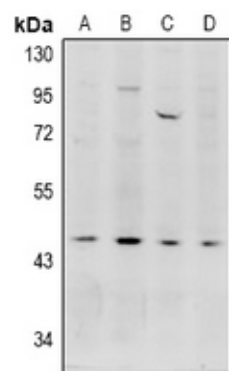
Protein Information

Name	ACR
Synonyms	ACRS
Function	Acrosin is the major protease of mammalian spermatozoa. It is a serine protease of trypsin-like cleavage specificity, it is synthesized in a zymogen form, proacrosin and stored in the acrosome.

Background

KLH-conjugated synthetic peptide encompassing a sequence within the N-term region of human Acrosin. The exact sequence is proprietary.

Images



Western blot analysis of Acrosin expression in HepG2 (A), HEK293T (B), MCF7 (C), LO2 (D) whole cell lysates.

Please note: All products are 'FOR RESEARCH USE ONLY. NOT FOR USE IN DIAGNOSTIC OR THERAPEUTIC PROCEDURES'.