

Anti-Complement C1R HC Antibody

Rabbit polyclonal antibody to Complement C1R HC
Catalog # AP61043

Product Information

| | |
|-------------------|------------------------|
| Application | WB |
| Primary Accession | P00736 |
| Reactivity | Human, Mouse, Rat |
| Host | Rabbit |
| Clonality | Polyclonal |
| Calculated MW | 80119 |

Additional Information

| | |
|--------------------|---|
| Gene ID | 715 |
| Other Names | Complement C1r subcomponent; Complement component 1 subcomponent r |
| Target/Specificity | Recognizes endogenous levels of Complement C1R HC protein. |
| Dilution | WB~~WB (1/500 - 1/1000) |
| Format | Liquid in 0.42% Potassium phosphate, 0.87% Sodium chloride, pH 7.3, 30% glycerol, and 0.09% (W/V) sodium azide. |
| Storage | Store at -20 °C.Stable for 12 months from date of receipt |

Protein Information

| | |
|----------|---|
| Name | C1R {ECO:0000303 PubMed:3021205, ECO:0000312 HGNC:HGNC:1246} |
| Function | <p>Serine protease component of the complement C1 complex, a multiprotein complex that initiates the classical pathway of the complement system, a cascade of proteins that leads to phagocytosis and breakdown of pathogens and signaling that strengthens the adaptive immune system (PubMed:17996945, PubMed:19473974, PubMed:29449492). C1R catalyzes the first enzymatic step in the classical complement pathway: it is activated by the C1Q subcomplex of the C1 complex, which associates with IgG or IgM immunoglobulins complexed with antigens to form antigen-antibody complexes on the surface of pathogens (PubMed:29449492, PubMed:34155115). Immunoglobulin-binding promotes the autocatalytic cleavage and activation of C1R (PubMed:11445589, PubMed:11673533, PubMed:17996945, PubMed:20178990, PubMed:6254570, PubMed:6271784). Activated C1R then cleaves and activates C1S, the second protease of the classical complement pathway (PubMed:11445589, PubMed:11673533, PubMed:6271784). It is unclear if C1R activates C1S within single, strained C1 complexes or between neighboring C1 complexes on surfaces</p> |

(PubMed:[28104818](#), PubMed:[29311313](#), PubMed:[29449492](#)).

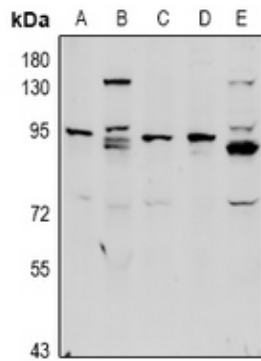
Cellular Location

Secreted. Cell surface. Note=Recruited to the surface of pathogens by the C1Q subcomplex.

Background

KLH-conjugated synthetic peptide encompassing a sequence within the center region of human Complement C1R HC. The exact sequence is proprietary.

Images



Western blot analysis of Complement C1R HC expression in Hela (A), HepG2 (B), MEF (C), C6 (D), U87MG (E) whole cell lysates.

Please note: All products are 'FOR RESEARCH USE ONLY. NOT FOR USE IN DIAGNOSTIC OR THERAPEUTIC PROCEDURES'.