

Anti-Cathepsin C HC Antibody

Rabbit polyclonal antibody to Cathepsin C HC
Catalog # AP61044

Product Information

Application	WB
Primary Accession	P53634
Reactivity	Human, Rat
Host	Rabbit
Clonality	Polyclonal
Calculated MW	51854

Additional Information

Gene ID	1075
Other Names	CPPI; Dipeptidyl peptidase 1; Cathepsin C; Cathepsin J; Dipeptidyl peptidase I; DPP-I; DPPI; Dipeptidyl transferase
Target/Specificity	Recognizes endogenous levels of Cathepsin C HC protein.
Dilution	WB~~WB (1/500 - 1/1000)
Format	Liquid in 0.42% Potassium phosphate, 0.87% Sodium chloride, pH 7.3, 30% glycerol, and 0.09% (W/V) sodium azide.
Storage	Store at -20 °C.Stable for 12 months from date of receipt

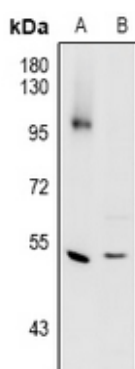
Protein Information

Name	CTSC
Synonyms	CPPI
Function	Thiol protease (PubMed: 1586157). Has dipeptidylpeptidase activity (PubMed: 1586157). Active against a broad range of dipeptide substrates composed of both polar and hydrophobic amino acids (PubMed: 1586157). Proline cannot occupy the P1 position and arginine cannot occupy the P2 position of the substrate (PubMed: 1586157). Can act as both an exopeptidase and endopeptidase (PubMed: 1586157). Activates serine proteases such as elastase, cathepsin G and granzymes A and B (PubMed: 8428921).
Cellular Location	Lysosome.
Tissue Location	Ubiquitous. Highly expressed in lung, kidney and placenta. Detected at intermediate levels in colon, small intestine, spleen and pancreas.

Background

KLH-conjugated synthetic peptide encompassing a sequence within the C-term region of human Cathepsin C HC. The exact sequence is proprietary.

Images



Western blot analysis of Cathepsin C HC expression in H9C2 (A), PC3 (B) whole cell lysates.

Please note: All products are 'FOR RESEARCH USE ONLY. NOT FOR USE IN DIAGNOSTIC OR THERAPEUTIC PROCEDURES'.