

# Anti-GPR103 Antibody

Rabbit polyclonal antibody to GPR103

Catalog # AP61046

## Product Information

---

Application	WB
Primary Accession	<a href="#">Q96P65</a>
Reactivity	Human
Host	Rabbit
Clonality	Polyclonal
Calculated MW	49488

## Additional Information

---

Gene ID	84109
Other Names	GPR103; Pyroglutamylated RFamide peptide receptor; AQ27; G-protein coupled receptor 103; Orexigenic neuropeptide QRFP receptor; SP9155
Target/Specificity	Recognizes endogenous levels of GPR103 protein.
Dilution	WB~~WB (1/500 - 1/1000)
Format	Liquid in 0.42% Potassium phosphate, 0.87% Sodium chloride, pH 7.3, 30% glycerol, and 0.09% (W/V) sodium azide.
Storage	Store at -20 °C.Stable for 12 months from date of receipt

## Protein Information

---

Name	QRFPR
Synonyms	GPR103
Function	Receptor for the orexigenic neuropeptide QRFP. The activity of this receptor is mediated by G proteins that modulate adenylate cyclase activity and intracellular calcium levels.
Cellular Location	Cell membrane; Multi-pass membrane protein.
Tissue Location	Expressed widely in the brain with high levels in the hypothalamus, trigeminal ganglia and vestibular neurons, and moderate levels in the amygdala, cortex, pituitary, hippocampus, thalamus, caudate nucleus and medulla oblongata. In peripheral tissues, expressed at high levels in the retina and at moderate levels in the heart, kidney, testis and thyroid.

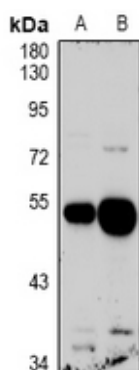
## Background

---

KLH-conjugated synthetic peptide encompassing a sequence within the C-term region of human GPR103. The exact sequence is proprietary.

## Images

---



Western blot analysis of GPR103 expression in U87MG (A), HEK293T (B) whole cell lysates.

Please note: All products are 'FOR RESEARCH USE ONLY. NOT FOR USE IN DIAGNOSTIC OR THERAPEUTIC PROCEDURES'.