

# Anti-GPR174 Antibody

Rabbit polyclonal antibody to GPR174

Catalog # AP61048

## Product Information

Application	WB, IF/IC
Primary Accession	<a href="#">Q9BXC1</a>
Other Accession	<a href="#">Q3U507</a>
Reactivity	Human, Mouse, Rat
Host	Rabbit
Clonality	Polyclonal
Calculated MW	38503

## Additional Information

Gene ID	84636
Other Names	Probable G-protein coupled receptor 174
Target/Specificity	Recognizes endogenous levels of GPR174 protein.
Dilution	WB~~WB (1/500 - 1/1000), IF/IC (1/100 - 1/500) IF/IC~~N/A
Format	Liquid in 0.42% Potassium phosphate, 0.87% Sodium chloride, pH 7.3, 30% glycerol, and 0.09% (W/V) sodium azide.
Storage	Store at -20 °C.Stable for 12 months from date of receipt

## Protein Information

Name	GPR174
Function	<p>G-protein-coupled receptor of lysophosphatidylserine (LysoPS) that plays different roles in immune response (PubMed:<a href="#">36823105</a>). Plays a negative role in regulatory T-cell accumulation and homeostasis. Under inflammatory conditions where LysoPS production increases, contributes to the down-regulation of regulatory T-cell activity to favor effector response. Mediates the suppression of IL-2 production in activated T-lymphocytes leading to inhibition of growth, proliferation and differentiation of T-cells. Mechanistically, acts via G(s)- containing heterotrimeric G proteins to trigger elevated cyclic AMP levels and protein kinase A/PKA activity, which may in turn act to antagonize proximal TCR signaling. Plays an important role in the initial period of sepsis through the regulation of macrophage polarization and pro- and anti-inflammatory cytokine secretions. Upon testosterone treatment, acts as a receptor for CCL21 and subsequently triggers through G(q)-alpha and G(12)/G(13) proteins a calcium flux leading to chemotactic effects on activated B-cells. Signals via GNA13 and PKA to promote CD86 up-regulation</p>

by follicular B-cells.

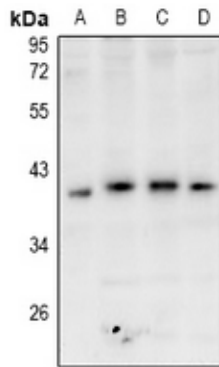
## Cellular Location

Cell membrane; Multi-pass membrane protein.

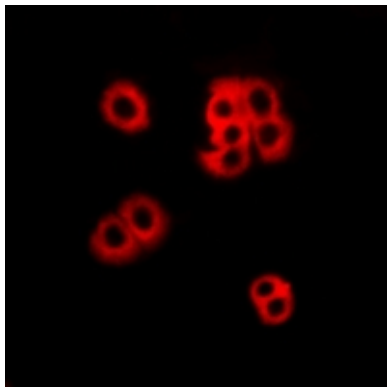
## Background

KLH-conjugated synthetic peptide encompassing a sequence within the center region of human GPR174. The exact sequence is proprietary.

## Images



Western blot analysis of GPR174 expression in BV2 (A), PC12 (B), A549 (C), HeLa (D) whole cell lysates.



Immunofluorescent analysis of GPR174 staining in LOVO cells. Formalin-fixed cells were permeabilized with 0.1% Triton X-100 in TBS for 5-10 minutes and blocked with 3% BSA-PBS for 30 minutes at room temperature. Cells were probed with the primary antibody in 3% BSA-PBS and incubated overnight at 4 °C in a humidified chamber. Cells were washed with PBST and incubated with Alexa Fluor 647-conjugated secondary antibody (red) in PBS at room temperature in the dark.

Please note: All products are 'FOR RESEARCH USE ONLY. NOT FOR USE IN DIAGNOSTIC OR THERAPEUTIC PROCEDURES'.