

Anti-MRGX4 Antibody

Rabbit polyclonal antibody to MRGX4

Catalog # AP61051

Product Information

Application	WB, IF/IC
Primary Accession	Q96LA9
Reactivity	Human, Mouse, Rat
Host	Rabbit
Clonality	Polyclonal
Calculated MW	36461

Additional Information

Gene ID	117196
Other Names	MRGX4; SNSR5; SNSR6; Mas-related G-protein coupled receptor member X4; Sensory neuron-specific G-protein coupled receptor 5/6
Target/Specificity	KLH-conjugated synthetic peptide encompassing a sequence within the C-term region of human MRGX4. The exact sequence is proprietary.
Dilution	WB~~WB (1/500 - 1/1000), IF/IC (1/100 - 1/500) IF/IC~~N/A
Format	Liquid in 0.42% Potassium phosphate, 0.87% Sodium chloride, pH 7.3, 30% glycerol, and 0.09% (W/V) sodium azide.
Storage	Store at -20 °C.Stable for 12 months from date of receipt

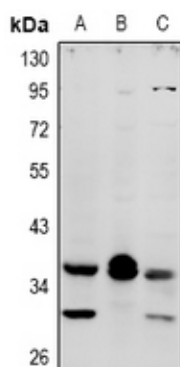
Protein Information

Name	MRGPRX4
Synonyms	MRGX4, SNSR5, SNSR6
Function	Orphan receptor. Probably involved in the function of nociceptive neurons. May regulate nociceptor function and/or development, including the sensation or modulation of pain. Potently activated by enkephalins (By similarity).
Cellular Location	Cell membrane; Multi-pass membrane protein.
Tissue Location	Uniquely localized in a subset of small dorsal root and trigeminal sensory neurons.

Background

KLH-conjugated synthetic peptide encompassing a sequence within the C-term region of human MRGX4. The exact sequence is proprietary.

Images



Western blot analysis of MRGX4 expression in U87MG (A), C6 (B), MCF7 (C) whole cell lysates.



Immunofluorescent analysis of MRGX4 staining in A549 cells. Formalin-fixed cells were permeabilized with 0.1% Triton X-100 in TBS for 5-10 minutes and blocked with 3% BSA-PBS for 30 minutes at room temperature. Cells were probed with the primary antibody in 3% BSA-PBS and incubated overnight at 4 °C in a humidified chamber. Cells were washed with PBST and incubated with Alexa Fluor 647-conjugated secondary antibody (red) in PBS at room temperature in the dark.

Please note: All products are 'FOR RESEARCH USE ONLY. NOT FOR USE IN DIAGNOSTIC OR THERAPEUTIC PROCEDURES'.