

Anti-p16 ARC Antibody

Rabbit polyclonal antibody to p16 ARC

Catalog # AP61055

Product Information

Application	WB
Primary Accession	O15511
Other Accession	Q9CPW4
Reactivity	Human, Mouse, Rat, Bovine
Host	Rabbit
Clonality	Polyclonal
Calculated MW	16320

Additional Information

Gene ID	10092
Other Names	ARC16; Actin-related protein 2/3 complex subunit 5; Arp2/3 complex 16 kDa subunit; p16-ARC
Target/Specificity	Recognizes endogenous levels of p16 ARC protein.
Dilution	WB~~WB (1/500 - 1/1000)
Format	Liquid in 0.42% Potassium phosphate, 0.87% Sodium chloride, pH 7.3, 30% glycerol, and 0.09% (W/V) sodium azide.
Storage	Store at -20 °C.Stable for 12 months from date of receipt

Protein Information

Name	ARPC5
Synonyms	ARC16
Function	Component of the Arp2/3 complex, a multiprotein complex that mediates actin polymerization upon stimulation by nucleation-promoting factor (NPF) (PubMed: 9230079). The Arp2/3 complex mediates the formation of branched actin networks in the cytoplasm, providing the force for cell motility (PubMed: 9230079). In addition to its role in the cytoplasmic cytoskeleton, the Arp2/3 complex also promotes actin polymerization in the nucleus, thereby regulating gene transcription and repair of damaged DNA (PubMed: 29925947). The Arp2/3 complex promotes homologous recombination (HR) repair in response to DNA damage by promoting nuclear actin polymerization, leading to drive motility of double-strand breaks (DSBs) (PubMed: 29925947).

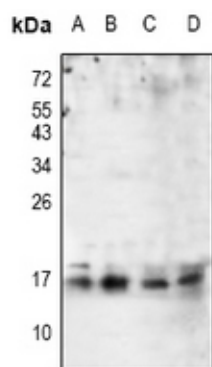
Cellular Location

Cytoplasm, cytoskeleton. Cell projection. Nucleus

Background

KLH-conjugated synthetic peptide encompassing a sequence within the N-term region of human p16 ARC. The exact sequence is proprietary.

Images



Western blot analysis of p16 ARC expression in Hela (A), MCF7 (B), mouse embryo (C), rat ovary (D) whole cell lysates.

Please note: All products are 'FOR RESEARCH USE ONLY. NOT FOR USE IN DIAGNOSTIC OR THERAPEUTIC PROCEDURES'.