

Anti-PAP Antibody

Rabbit polyclonal antibody to PAP
Catalog # AP61057

Product Information

Application	WB
Primary Accession	P51003
Other Accession	Q61183
Reactivity	Human, Mouse, Bovine
Host	Rabbit
Clonality	Polyclonal
Calculated MW	82843

Additional Information

Gene ID	10914
Other Names	PAP; Poly(A) polymerase alpha; PAP-alpha; Polynucleotide adenylyltransferase alpha
Target/Specificity	KLH-conjugated synthetic peptide encompassing a sequence within the center region of human PAP. The exact sequence is proprietary.
Dilution	WB~WB (1/500 - 1/1000)
Format	Liquid in 0.42% Potassium phosphate, 0.87% Sodium chloride, pH 7.3, 30% glycerol, and 0.09% (W/V) sodium azide.
Storage	Store at -20 °C. Stable for 12 months from date of receipt

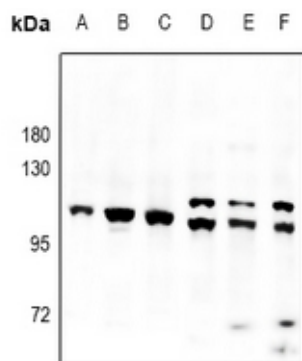
Protein Information

Name	PAPOLA
Synonyms	PAP
Function	Polymerase that creates the 3'-poly(A) tail of mRNA's. Also required for the endoribonucleolytic cleavage reaction at some polyadenylation sites. May acquire specificity through interaction with a cleavage and polyadenylation specificity factor (CPSF) at its C- terminus.
Cellular Location	Cytoplasm. Nucleus. Note=The 90 kDa form is nuclear while the 100 kDa and the 106 kDa forms are both nuclear and cytoplasmic

Background

KLH-conjugated synthetic peptide encompassing a sequence within the center region of human PAP. The exact sequence is proprietary.

Images



Western blot analysis of PAP expression in HCC827 (A), mouse embryo (B), PMVEC (C), EC9706 (D), SGC7901 (E), HEK293T (F) whole cell lysates.

Please note: All products are 'FOR RESEARCH USE ONLY. NOT FOR USE IN DIAGNOSTIC OR THERAPEUTIC PROCEDURES'.