

Anti-P5CS Antibody

Rabbit polyclonal antibody to P5CS
Catalog # AP61058

Product Information

Application	WB
Primary Accession	P54886
Other Accession	Q9Z110
Reactivity	Human, Mouse
Host	Rabbit
Clonality	Polyclonal
Calculated MW	87302

Additional Information

Gene ID	5832
Other Names	GSAS; P5CS; PYCS; Delta-1-pyrroline-5-carboxylate synthase; P5CS; Aldehyde dehydrogenase family 18 member A1
Target/Specificity	KLH-conjugated synthetic peptide encompassing a sequence within the C-term region of human P5CS. The exact sequence is proprietary.
Dilution	WB~~WB (1/500 - 1/1000)
Format	Liquid in 0.42% Potassium phosphate, 0.87% Sodium chloride, pH 7.3, 30% glycerol, and 0.09% (W/V) sodium azide.
Storage	Store at -20 °C.Stable for 12 months from date of receipt

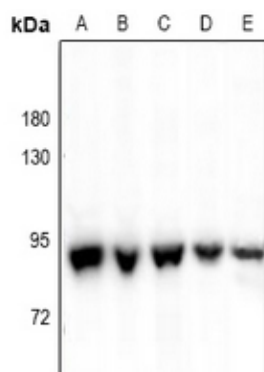
Protein Information

Name	ALDH18A1
Synonyms	GSAS, P5CS, PYCS
Function	Bifunctional enzyme that converts glutamate to glutamate 5- semialdehyde, an intermediate in the biosynthesis of proline, ornithine and arginine.
Cellular Location	Mitochondrion. Mitochondrion matrix. Note=Exhibits puncta-like structures inside mitochondria under nutrient stress (PubMed:32770108). When cellular dependence on oxidative phosphorylation increases, forms filaments, which may increase its activity, and is sequestered in a subset of atypical mitochondria that lack cristae and ATP synthase (PubMed:39506109).

Background

KLH-conjugated synthetic peptide encompassing a sequence within the C-term region of human P5CS. The exact sequence is proprietary.

Images



Western blot analysis of P5CS expression in HCT116 (A), Panc1 (B), SGC7901 (C), A375 (D), mouse embryo (E) whole cell lysates.

Please note: All products are 'FOR RESEARCH USE ONLY. NOT FOR USE IN DIAGNOSTIC OR THERAPEUTIC PROCEDURES'.