

Anti-CRK (pY221) Antibody

Rabbit polyclonal antibody to CRK (pY221)

Catalog # AP61062

Product Information

Application	WB, IF/IC
Primary Accession	P46108
Other Accession	Q64010
Reactivity	Human, Mouse, Rat
Host	Rabbit
Clonality	Polyclonal
Calculated MW	33831

Additional Information

Gene ID	1398
Other Names	Adapter molecule crk; Proto-oncogene c-Crk; p38
Target/Specificity	Recognizes endogenous levels of CRK (pY221) protein.
Dilution	WB~~WB (1/500 - 1/1000), IF/IC (1/100 - 1/500) IF/IC~~N/A
Format	Liquid in 0.42% Potassium phosphate, 0.87% Sodium chloride, pH 7.3, 30% glycerol, and 0.09% (W/V) sodium azide.
Storage	Store at -20 °C.Stable for 12 months from date of receipt

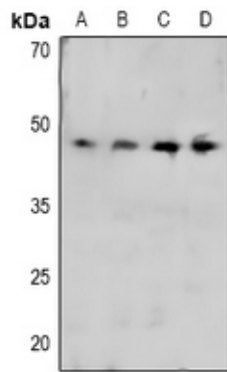
Protein Information

Name	CRK
Function	Involved in cell branching and adhesion mediated by BCAR1- CRK-RAPGEF1 signaling and activation of RAP1.
Cellular Location	Cytoplasm. Cell membrane. Note=Translocated to the plasma membrane upon cell adhesion.

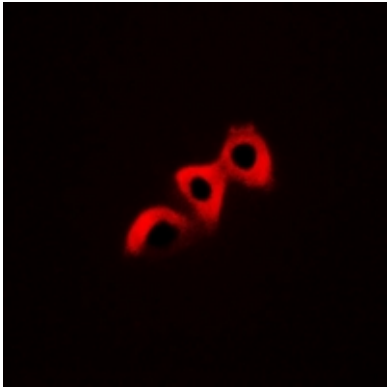
Background

KLH-conjugated synthetic peptide encompassing a sequence within the center region of human CRK. The exact sequence is proprietary.

Images



Western blot analysis of CRK (pY221) expression in HeLa (A), THP1 (B), mouse liver (C), rat liver (D) whole cell lysates.



Immunofluorescent analysis of CRK (pY221) staining in HuvEc cells. Formalin-fixed cells were permeabilized with 0.1% Triton X-100 in TBS for 5-10 minutes and blocked with 3% BSA-PBS for 30 minutes at room temperature. Cells were probed with the primary antibody in 3% BSA-PBS and incubated overnight at 4 °C in a humidified chamber. Cells were washed with PBST and incubated with Alexa Fluor 647-conjugated secondary antibody (red) in PBS at room temperature in the dark.

Please note: All products are 'FOR RESEARCH USE ONLY. NOT FOR USE IN DIAGNOSTIC OR THERAPEUTIC PROCEDURES'.