

Anti-TPH1 (pS58) Antibody

Rabbit polyclonal antibody to TPH1 (pS58)

Catalog # AP61076

Product Information

Application	WB, IHC
Primary Accession	P17752
Other Accession	P17532
Reactivity	Human, Mouse, Rat, Rabbit, Chicken
Host	Rabbit
Clonality	Polyclonal
Calculated MW	50985

Additional Information

Gene ID	7166
Other Names	TPH; TPRH; TRPH; Tryptophan 5-hydroxylase 1; Tryptophan 5-monooxygenase 1
Target/Specificity	Recognizes endogenous levels of TPH1 (pS58) protein.
Dilution	WB~~WB (1/500 - 1/1000), IHC (1/50 - 1/100) IHC~~WB (1/500 - 1/1000), IHC (1/50 - 1/100)
Format	Liquid in 0.42% Potassium phosphate, 0.87% Sodium chloride, pH 7.3, 30% glycerol, and 0.09% (W/V) sodium azide.
Storage	Store at -20 °C.Stable for 12 months from date of receipt

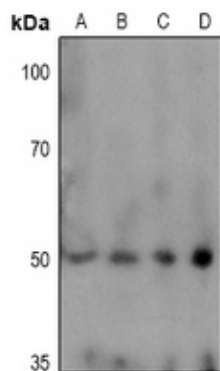
Protein Information

Name	TPH1
Synonyms	TPH, TPRH, TRPH
Function	Oxidizes L-tryptophan to 5-hydroxy-l-tryptophan in the rate- determining step of serotonin biosynthesis.
Tissue Location	[Isoform 2]: Seems to be less widely expressed than isoform 1.

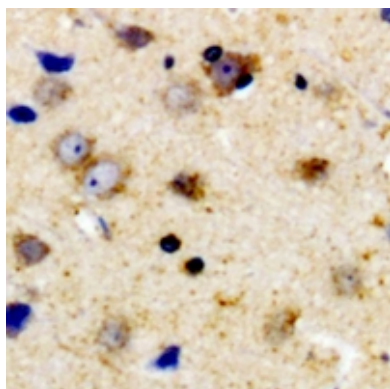
Background

KLH-conjugated synthetic peptide encompassing a sequence within the N-term region of human TPH1. The exact sequence is proprietary.

Images



Western blot analysis of TPH1 (pS58) expression in HEK293T (A), THP1 (B), MCF7 (C), SGC7901 (D) whole cell lysates.



Immunohistochemical analysis of TPH1 (pS58) staining in human brain formalin fixed paraffin embedded tissue section. The section was pre-treated using heat mediated antigen retrieval with sodium citrate buffer (pH 6.0). The section was then incubated with the antibody at room temperature and detected using an HRP conjugated compact polymer system. DAB was used as the chromogen. The section was then counterstained with haematoxylin and mounted with DPX.

Please note: All products are 'FOR RESEARCH USE ONLY. NOT FOR USE IN DIAGNOSTIC OR THERAPEUTIC PROCEDURES'.