

Anti-CD91 (pS4520) Antibody

Rabbit polyclonal antibody to CD91 (pS4520)
Catalog # AP61095

Product Information

Application	WB
Primary Accession	Q07954
Other Accession	Q91ZX7
Reactivity	Human, Mouse, Rat
Host	Rabbit
Clonality	Polyclonal

Additional Information

Other Names	A2MR; APR; Prolow-density lipoprotein receptor-related protein 1; LRP-1; Alpha-2-macroglobulin receptor; A2MR; Apolipoprotein E receptor; APOER; CD91
Target/Specificity	KLH-conjugated synthetic peptide encompassing a sequence within the C-term region of human CD91. The exact sequence is proprietary.
Dilution	WB--WB (1/500 - 1/1000)
Format	Liquid in 0.42% Potassium phosphate, 0.87% Sodium chloride, pH 7.3, 30% glycerol, and 0.09% (W/V) sodium azide.
Storage	Store at -20 °C. Stable for 12 months from date of receipt

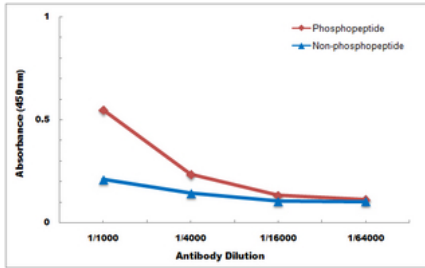
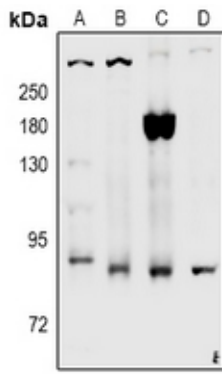
Protein Information

Background

KLH-conjugated synthetic peptide encompassing a sequence within the C-term region of human CD91. The exact sequence is proprietary.

Images

Western blot analysis of CD91 (pS4520) expression in rat brain (A), C6 (B), LO2 (C), HEK293T (D) whole cell lysates.



Direct ELISA antibody dose-response curve using Anti-CD91 (pS4520) Antibody. Antigen (phosphopeptide and non-phosphopeptide) concentration is 5 ug/ml. Goat Anti-Rabbit IgG (H&L) - HRP was used as the secondary antibody, and signal was developed by TMB substrate.

Please note: All products are 'FOR RESEARCH USE ONLY. NOT FOR USE IN DIAGNOSTIC OR THERAPEUTIC PROCEDURES'.