

Anti-Claudin 4 (pY208) Antibody

Rabbit polyclonal antibody to Claudin 4 (pY208)

Catalog # AP61098

Product Information

Application	WB, IHC
Primary Accession	O14493
Other Accession	O35054
Reactivity	Human, Mouse, Rat
Host	Rabbit
Clonality	Polyclonal
Calculated MW	22077

Additional Information

Gene ID	1364
Other Names	CPER; CPETR1; WBSCR8; Claudin-4; Clostridium perfringens enterotoxin receptor; CPE-R; CPE-receptor; Williams-Beuren syndrome chromosomal region 8 protein
Target/Specificity	Recognizes endogenous levels of Claudin 4 (pY208) protein.
Dilution	WB~~WB (1/500 - 1/1000), IHC (1/50 - 1/100) IHC~~WB (1/500 - 1/1000), IHC (1/50 - 1/100)
Format	Liquid in 0.42% Potassium phosphate, 0.87% Sodium chloride, pH 7.3, 30% glycerol, and 0.09% (W/V) sodium azide.
Storage	Store at -20 °C.Stable for 12 months from date of receipt

Protein Information

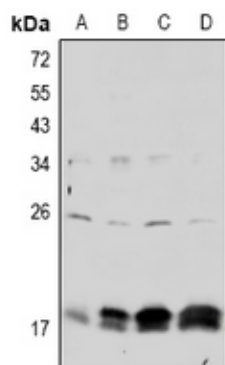
Name	CLDN4 {ECO:0000303 PubMed:35773259, ECO:0000312 HGNC:HGNC:2046}
Function	<p>Can associate with other claudins to regulate tight junction structural and functional strand dynamics (PubMed:35773259, PubMed:36008380). May coassemble with CLDN8 into tight junction strands containing anion-selective channels that convey paracellular chloride permeability in renal collecting ducts (By similarity) (PubMed:36008380). May integrate into CLDN3 strands to modulate localized tight junction barrier properties (PubMed:35773259, PubMed:36008380). May disrupt strand assembly of channel-forming CLDN2 and CLDN15 and inhibit cation conductance (PubMed:35773259, PubMed:36008380). Cannot form tight junction strands on its own (PubMed:35773259, PubMed:36008380).</p> <p>Cell junction, tight junction. Cell membrane; Multi-pass membrane protein</p>

Cellular Location

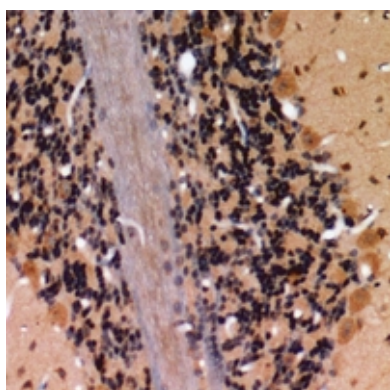
Background

KLH-conjugated synthetic peptide encompassing a sequence within the C-term region of human Claudin 4. The exact sequence is proprietary.

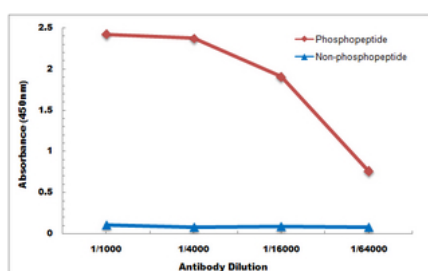
Images



Western blot analysis of Claudin 4 (pY208) expression in mouse embryo (A), rat ovary (B), Panc1 (C), HCT116 (D) whole cell lysates.



Immunohistochemical analysis of Claudin 4 (pY208) staining in human brain formalin fixed paraffin embedded tissue section. The section was pre-treated using heat mediated antigen retrieval with sodium citrate buffer (pH 6.0). The section was then incubated with the antibody at room temperature and detected using an HRP conjugated compact polymer system. DAB was used as the chromogen. The section was then counterstained with haematoxylin and mounted with DPX.



Direct ELISA antibody dose-response curve using Anti-Claudin 4 (pY208) Antibody. Antigen (phosphopeptide and non-phosphopeptide) concentration is 5 ug/ml. Goat Anti-Rabbit IgG (H&L) - HRP was used as the secondary antibody, and signal was developed by TMB substrate.

Please note: All products are 'FOR RESEARCH USE ONLY. NOT FOR USE IN DIAGNOSTIC OR THERAPEUTIC PROCEDURES'.