

# Anti-RGS19 (pS151) Antibody

Rabbit polyclonal antibody to RGS19 (pS151)

Catalog # AP61101

## Product Information

Application	WB
Primary Accession	<a href="#">P49795</a>
Other Accession	<a href="#">Q9CX84</a>
Reactivity	Human, Mouse, Rat, Bovine
Host	Rabbit
Clonality	Polyclonal
Calculated MW	24636

## Additional Information

Gene ID	10287
Other Names	GAIP; GNAI3IP; Regulator of G-protein signaling 19; RGS19; G-alpha-interacting protein; GAIP
Target/Specificity	KLH-conjugated synthetic peptide encompassing a sequence within the center region of human RGS19. The exact sequence is proprietary.
Dilution	WB~~WB (1/500 - 1/1000)
Format	Liquid in 0.42% Potassium phosphate, 0.87% Sodium chloride, pH 7.3, 30% glycerol, and 0.09% (W/V) sodium azide.
Storage	Store at -20 °C.Stable for 12 months from date of receipt

## Protein Information

Name	RGS19
Synonyms	GAIP, GNAI3IP
Function	Inhibits signal transduction by increasing the GTPase activity of G protein alpha subunits thereby driving them into their inactive GDP-bound form. Binds to G-alpha subfamily 1 members, with the order G(i)a3 > G(i)a1 > G(o)a >> G(z)a/G(i)a2. Activity on G(z)-alpha is inhibited by phosphorylation and palmitoylation of the G-protein.
Cellular Location	Membrane; Lipid-anchor.
Tissue Location	Highest expression in lung. Placenta, liver and heart also express high levels of GAIP

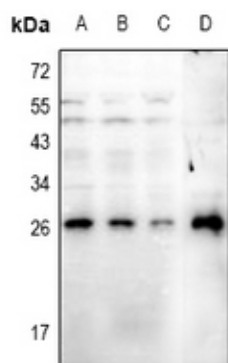
## Background

---

KLH-conjugated synthetic peptide encompassing a sequence within the center region of human RGS19. The exact sequence is proprietary.

## Images

---



Western blot analysis of RGS19 (pS151) expression in A549 (A), H1792 (B), HepG2 (C), rat heart (D) whole cell lysates.

Please note: All products are 'FOR RESEARCH USE ONLY. NOT FOR USE IN DIAGNOSTIC OR THERAPEUTIC PROCEDURES'.