

# Anti-MBP (pT232) Antibody

Rabbit polyclonal antibody to MBP (pT232)

Catalog # AP61102

## Product Information

Application	WB
Primary Accession	<a href="#">P02686</a>
Other Accession	<a href="#">P04370</a>
Reactivity	Human, Mouse, Rat, Pig, Bovine
Host	Rabbit
Clonality	Polyclonal
Calculated MW	33117

## Additional Information

Gene ID	4155
Other Names	Myelin basic protein; MBP; Myelin A1 protein; Myelin membrane encephalitogenic protein
Target/Specificity	KLH-conjugated synthetic peptide encompassing a sequence within the center region of human MBP. The exact sequence is proprietary.
Dilution	WB~~WB (1/500 - 1/1000)
Format	Liquid in 0.42% Potassium phosphate, 0.87% Sodium chloride, pH 7.3, 30% glycerol, and 0.09% (W/V) sodium azide.
Storage	Store at -20 °C.Stable for 12 months from date of receipt

## Protein Information

Name	MBP
Function	<p>The classic group of MBP isoforms (isoform 4-isoform 14) are with PLP the most abundant protein components of the myelin membrane in the CNS. They have a role in both its formation and stabilization. The smaller isoforms might have an important role in remyelination of denuded axons in multiple sclerosis. The non-classic group of MBP isoforms (isoform 1-isoform 3/Golli-MBPs) may preferentially have a role in the early developing brain long before myelination, maybe as components of transcriptional complexes, and may also be involved in signaling pathways in T-cells and neural cells. Differential splicing events combined with optional post-translational modifications give a wide spectrum of isomers, with each of them potentially having a specialized function. Induces T-cell proliferation.</p> <p>Myelin membrane; Peripheral membrane protein; Cytoplasmic side.</p>

## Cellular Location

Note=Cytoplasmic side of myelin

## Tissue Location

MBP isoforms are found in both the central and the peripheral nervous system, whereas Golli-MBP isoforms are expressed in fetal thymus, spleen and spinal cord, as well as in cell lines derived from the immune system.

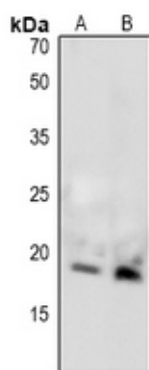
## Background

---

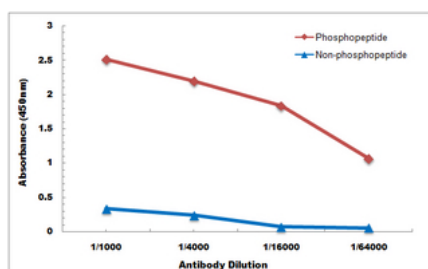
KLH-conjugated synthetic peptide encompassing a sequence within the center region of human MBP. The exact sequence is proprietary.

## Images

---



Western blot analysis of MBP (pT232) expression in mouse brain (A), rat brain (B) whole cell lysates.



Direct ELISA antibody dose-response curve using Anti-MBP (pT232) Antibody. Antigen (phosphopeptide and non-phosphopeptide) concentration is 5 ug/ml. Goat Anti-Rabbit IgG (H&L) - HRP was used as the secondary antibody, and signal was developed by TMB substrate.

Please note: All products are 'FOR RESEARCH USE ONLY. NOT FOR USE IN DIAGNOSTIC OR THERAPEUTIC PROCEDURES'.