

Anti-CCR5 Antibody

Rabbit polyclonal antibody to CCR5

Catalog # AP61109

Product Information

Application	WB
Primary Accession	P51681
Other Accession	P51682
Reactivity	Human, Mouse, Monkey, Bovine
Host	Rabbit
Clonality	Polyclonal
Calculated MW	40524

Additional Information

Gene ID	1234
Other Names	CMKBR5; C-C chemokine receptor type 5; C-C CKR-5; CC-CKR-5; CCR-5; CCR5; CHEMR13; HIV-1 fusion coreceptor; CD195
Target/Specificity	KLH-conjugated synthetic peptide encompassing a sequence within the C-term region of human CCR5. The exact sequence is proprietary.
Dilution	WB~~WB (1/500 - 1/1000)
Format	Liquid in 0.42% Potassium phosphate, 0.87% Sodium chloride, pH 7.3, 30% glycerol, and 0.09% (W/V) sodium azide.
Storage	Store at -20 °C.Stable for 12 months from date of receipt

Protein Information

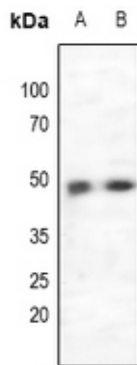
Name	CCR5 (HGNC:1606)
Synonyms	CMKBR5
Function	Receptor for a number of inflammatory CC-chemokines including CCL3/MIP-1-alpha, CCL4/MIP-1-beta and RANTES and subsequently transduces a signal by increasing the intracellular calcium ion level. May play a role in the control of granulocytic lineage proliferation or differentiation. Participates in T-lymphocyte migration to the infection site by acting as a chemotactic receptor (PubMed: 30713770).
Cellular Location	Cell membrane; Multi-pass membrane protein
Tissue Location	Highly expressed in spleen, thymus, in the myeloid cell line THP-1, in the promyeloblastic cell line KG-1a and on CD4+ and CD8+ T-cells. Medium levels

in peripheral blood leukocytes and in small intestine. Low levels in ovary and lung.

Background

KLH-conjugated synthetic peptide encompassing a sequence within the C-term region of human CCR5. The exact sequence is proprietary.

Images



Western blot analysis of CCR5 expression in K562 (A), MCF7 (B) whole cell lysates.

Please note: All products are 'FOR RESEARCH USE ONLY. NOT FOR USE IN DIAGNOSTIC OR THERAPEUTIC PROCEDURES'.