

# Anti-SF1 Antibody

Rabbit polyclonal antibody to SF1  
Catalog # AP61122

## Product Information

---

Application	WB, IF/IC, IHC
Primary Accession	<a href="#">Q15637</a>
Other Accession	<a href="#">Q64213</a>
Reactivity	Human, Mouse
Host	Rabbit
Clonality	Polyclonal
Calculated MW	68330

## Additional Information

---

Gene ID	7536
Other Names	ZFM1; ZNF162; Splicing factor 1; Mammalian branch point-binding protein; BBP; mBBP; Transcription factor ZFM1; Zinc finger gene in MEN1 locus; Zinc finger protein 162
Target/Specificity	Recognizes endogenous levels of SF1 protein.
Dilution	WB~~WB (1/500 - 1/1000), IHC (1/50 - 1/100), IF/IC (1/100 - 1/500) IF/IC~~N/A IHC~~WB (1/500 - 1/1000), IHC (1/50 - 1/100), IF/IC (1/100 - 1/500)
Format	Liquid in 0.42% Potassium phosphate, 0.87% Sodium chloride, pH 7.3, 30% glycerol, and 0.09% (W/V) sodium azide.
Storage	Store at -20 °C.Stable for 12 months from date of receipt

## Protein Information

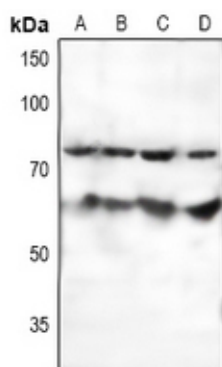
---

Name	SF1
Synonyms	ZFM1, ZNF162
Function	Necessary for the ATP-dependent first step of spliceosome assembly. Binds to the intron branch point sequence (BPS) 5'-UACUAAAC-3' of the pre-mRNA. May act as transcription repressor.
Cellular Location	Nucleus.
Tissue Location	Detected in lung, ovary, adrenal gland, colon, kidney, muscle, pancreas, thyroid, placenta, brain, liver and heart

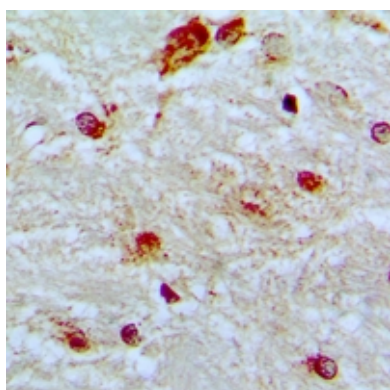
## Background

KLH-conjugated synthetic peptide encompassing a sequence within the N-term region of human SF1. The exact sequence is proprietary.

## Images



Western blot analysis of SF1 expression in HEK293T (A), HeLa (B), K562 (C), LO2 (D) whole cell lysates.



Immunohistochemical analysis of SF1 staining in human brain formalin fixed paraffin embedded tissue section. The section was pre-treated using heat mediated antigen retrieval with sodium citrate buffer (pH 6.0). The section was then incubated with the antibody at room temperature and detected using an HRP conjugated compact polymer system. DAB was used as the chromogen. The section was then counterstained with haematoxylin and mounted with DPX.



Immunofluorescent analysis of SF1 staining in HeLa cells. Formalin-fixed cells were permeabilized with 0.1% Triton X-100 in TBS for 5-10 minutes and blocked with 3% BSA-PBS for 30 minutes at room temperature. Cells were probed with the primary antibody in 3% BSA-PBS and incubated overnight at 4 °C in a humidified chamber. Cells were washed with PBST and incubated with Alexa Fluor 647-conjugated secondary antibody (red) in PBS at room temperature in the dark.

Please note: All products are 'FOR RESEARCH USE ONLY. NOT FOR USE IN DIAGNOSTIC OR THERAPEUTIC PROCEDURES'.