

Anti-Semaphorin 4C Antibody

Rabbit polyclonal antibody to Semaphorin 4C

Catalog # AP61124

Product Information

Application	WB
Primary Accession	Q9C0C4
Other Accession	Q64151
Reactivity	Human, Mouse, Rat
Host	Rabbit
Clonality	Polyclonal
Calculated MW	92623

Additional Information

Gene ID	54910
Other Names	KIAA1739; SEMAI; Semaphorin-4C
Target/Specificity	Recognizes endogenous levels of Semaphorin 4C protein.
Dilution	WB~~WB (1/500 - 1/1000)
Format	Liquid in 0.42% Potassium phosphate, 0.87% Sodium chloride, pH 7.3, 30% glycerol, and 0.09% (W/V) sodium azide.
Storage	Store at -20 °C.Stable for 12 months from date of receipt

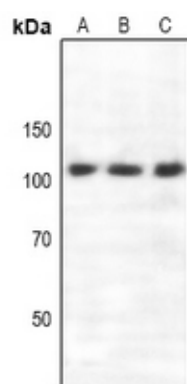
Protein Information

Name	SEMA4C
Synonyms	KIAA1739, SEMAI
Function	Cell surface receptor for PLXNB2 that plays an important role in cell-cell signaling. PLXNB2 binding promotes downstream activation of RHOA and phosphorylation of ERBB2 at 'Tyr-1248'. Required for normal brain development, axon guidance and cell migration (By similarity). Probable signaling receptor which may play a role in myogenic differentiation through activation of the stress-activated MAPK cascade.
Cellular Location	Postsynaptic density membrane; Single-pass type I membrane protein. Cytoplasmic vesicle, secretory vesicle, synaptic vesicle membrane; Single-pass type I membrane protein

Background

KLH-conjugated synthetic peptide encompassing a sequence within the center region of human Semaphorin 4C. The exact sequence is proprietary.

Images



Western blot analysis of Semaphorin 4C expression in A549 (A), mouse brain (B), rat brain (C) whole cell lysates.

Please note: All products are 'FOR RESEARCH USE ONLY. NOT FOR USE IN DIAGNOSTIC OR THERAPEUTIC PROCEDURES'.