

Anti-CD360 Antibody

Rabbit polyclonal antibody to CD360

Catalog # AP61125

Product Information

Application	WB
Primary Accession	Q9HBE5
Other Accession	Q9JHX3
Reactivity	Human, Mouse
Host	Rabbit
Clonality	Polyclonal
Calculated MW	59130

Additional Information

Gene ID	50615
Other Names	NILR; Interleukin-21 receptor; IL-21 receptor; IL-21R; Novel interleukin receptor; CD360
Target/Specificity	Recognizes endogenous levels of CD360 protein.
Dilution	WB~~WB (1/500 - 1/1000)
Format	Liquid in 0.42% Potassium phosphate, 0.87% Sodium chloride, pH 7.3, 30% glycerol, and 0.09% (W/V) sodium azide.
Storage	Store at -20 °C.Stable for 12 months from date of receipt

Protein Information

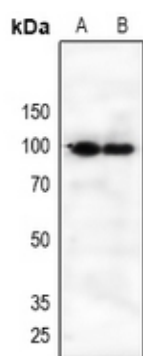
Name	IL21R
Synonyms	NILR
Function	This is a receptor for interleukin-21.
Cellular Location	Membrane; Single-pass type I membrane protein.
Tissue Location	Selectively expressed in lymphoid tissues. Most highly expressed in thymus and spleen

Background

KLH-conjugated synthetic peptide encompassing a sequence within the center region of human CD360. The

exact sequence is proprietary.

Images



Western blot analysis of CD360 expression in HEK293T (A), A549 (B) whole cell lysates.

Please note: All products are 'FOR RESEARCH USE ONLY. NOT FOR USE IN DIAGNOSTIC OR THERAPEUTIC PROCEDURES'.