

Anti-PAX6 Antibody

Rabbit polyclonal antibody to PAX6
Catalog # AP61127

Product Information

Application	WB
Primary Accession	P26367
Other Accession	P63015
Reactivity	Human, Mouse, Rat, Zebrafish, Chicken, Bovine
Host	Rabbit
Clonality	Polyclonal
Calculated MW	46683

Additional Information

Gene ID	5080
Other Names	AN2; Paired box protein Pax-6; Aniridia type II protein; Oculorhombin
Target/Specificity	Recognizes endogenous levels of PAX6 protein.
Dilution	WB--WB (1/500 - 1/1000)
Format	Liquid in 0.42% Potassium phosphate, 0.87% Sodium chloride, pH 7.3, 30% glycerol, and 0.09% (W/V) sodium azide.
Storage	Store at -20 °C. Stable for 12 months from date of receipt

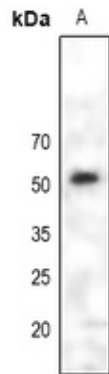
Protein Information

Name	PAX6
Synonyms	AN2
Function	Transcription factor with important functions in the development of the eye, nose, central nervous system and pancreas. Required for the differentiation of pancreatic islet alpha cells (By similarity). Competes with PAX4 in binding to a common element in the glucagon, insulin and somatostatin promoters. Regulates specification of the ventral neuron subtypes by establishing the correct progenitor domains (By similarity). Acts as a transcriptional repressor of NFATC1- mediated gene expression (By similarity).
Cellular Location	Nucleus {ECO:0000250 UniProtKB:P63015}. [Isoform 5a]: Nucleus {ECO:0000250 UniProtKB:P63016}
Tissue Location	[Isoform 1]: Expressed in lymphoblasts.

Background

KLH-conjugated synthetic peptide encompassing a sequence within the center region of human PAX6. The exact sequence is proprietary.

Images



Western blot analysis of PAX6 expression in HEK293T (A) whole cell lysates.

Please note: All products are 'FOR RESEARCH USE ONLY. NOT FOR USE IN DIAGNOSTIC OR THERAPEUTIC PROCEDURES'.