

Anti-MPP6 Antibody

Rabbit polyclonal antibody to MPP6

Catalog # AP61128

Product Information

Application	WB
Primary Accession	Q9NZW5
Other Accession	Q9JLB0
Reactivity	Human, Mouse
Host	Rabbit
Clonality	Polyclonal
Calculated MW	61117

Additional Information

Gene ID	51678
Other Names	VAM1; MAGUK p55 subfamily member 6; Veli-associated MAGUK 1; VAM-1
Target/Specificity	Recognizes endogenous levels of MPP6 protein.
Dilution	WB~~WB (1/500 - 1/1000)
Format	Liquid in 0.42% Potassium phosphate, 0.87% Sodium chloride, pH 7.3, 30% glycerol, and 0.09% (W/V) sodium azide.
Storage	Store at -20 °C.Stable for 12 months from date of receipt

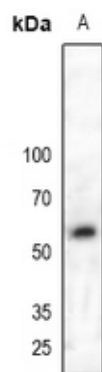
Protein Information

Name	PALS2 (HGNC:18167)
Synonyms	MPP6, VAM1
Cellular Location	Membrane; Peripheral membrane protein
Tissue Location	Abundant in testis, brain, and kidney with lower levels detectable in other tissues

Background

KLH-conjugated synthetic peptide encompassing a sequence within the C-term region of human MPP6. The exact sequence is proprietary.

Images



Western blot analysis of MPP6 expression in HEK293T (A) whole cell lysates.

Please note: All products are 'FOR RESEARCH USE ONLY. NOT FOR USE IN DIAGNOSTIC OR THERAPEUTIC PROCEDURES'.