

Anti-MCH Antibody

Rabbit polyclonal antibody to MCH

Catalog # AP61133

Product Information

Application	WB
Primary Accession	P20382
Other Accession	P56942
Reactivity	Human, Mouse, Rat, Drosophila
Host	Rabbit
Clonality	Polyclonal
Calculated MW	18679

Additional Information

Gene ID	5367
Other Names	MCH; Pro-MCH
Target/Specificity	Recognizes endogenous levels of MCH protein.
Dilution	WB~~WB (1/500 - 1/1000)
Format	Liquid in 0.42% Potassium phosphate, 0.87% Sodium chloride, pH 7.3, 30% glycerol, and 0.09% (W/V) sodium azide.
Storage	Store at -20 °C.Stable for 12 months from date of receipt

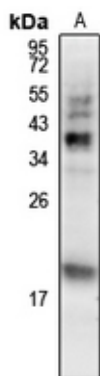
Protein Information

Name	PMCH
Synonyms	MCH
Function	MCH may act as a neurotransmitter or neuromodulator in a broad array of neuronal functions directed toward the regulation of goal-directed behavior, such as food intake, and general arousal. May also have a role in spermatocyte differentiation.
Cellular Location	Secreted.
Tissue Location	Predominantly expressed in lateral hypothalamus, also detected in pallidum, neocortex and cerebellum. Also found in thymus, brown adipose tissue, duodenum and testis (spermatogonia, early spermatocytes and Sertoli cells). No expression in peripheral blood. In brain exclusively mature MCH and NEI peptides are present. In peripheral tissues a large product, encompassing the NEI and MCH domains of the precursor, is found predominantly

Background

KLH-conjugated synthetic peptide encompassing a sequence within the C-term region of human MCH. The exact sequence is proprietary.

Images



Western blot analysis of MCH expression in U87MG (A) whole cell lysates.

Please note: All products are 'FOR RESEARCH USE ONLY. NOT FOR USE IN DIAGNOSTIC OR THERAPEUTIC PROCEDURES'.