

Anti-NF-E4 (AcK43) Antibody

Rabbit polyclonal antibody to NF-E4 (AcK43)

Catalog # AP61138

Product Information

Application	WB
Primary Accession	Q86UQ8
Reactivity	Human, Mouse
Host	Rabbit
Clonality	Polyclonal
Calculated MW	19019

Additional Information

Other Names	Transcription factor NF-E4
Target/Specificity	KLH-conjugated synthetic peptide encompassing a sequence within the center region of human NF-E4 (AcK43). The exact sequence is proprietary.
Dilution	WB~~WB (1/500 - 1/1000)
Format	Liquid in 0.42% Potassium phosphate, 0.87% Sodium chloride, pH 7.3, 30% glycerol, and 0.09% (W/V) sodium azide.
Storage	Store at -20 °C.Stable for 12 months from date of receipt

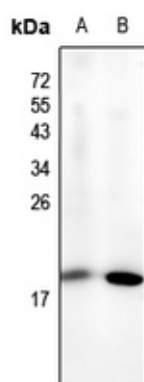
Protein Information

Name	NFE4
Function	Functions as part of the SSP (stage selector protein) complex, a complex that contributes to the preferential expression of the gamma-gene in fetal erythroid cells by facilitating the interaction of the gamma-globin genes with enhancer elements contained in the locus control region (LCR). The complex binds to the stage selector element (SSE) in the proximal gamma-globin promoter. In contrast, isoform 2 acts as a repressor of gamma-globin gene expression by preventing NFE2 and RNA polymerase II recruitment to the promoter.
Cellular Location	Nucleus.
Tissue Location	Specifically expressed in fetal liver, cord blood and bone marrow. Also expressed in the K562 and HEL cell lines, which constitutively express the fetal globin genes

Background

KLH-conjugated synthetic peptide encompassing a sequence within the center region of human NF-E4 (AcK43). The exact sequence is proprietary.

Images



Western blot analysis of NF-E4 (AcK43) expression in SP20 (A), HeLa (B) whole cell lysates.

Please note: All products are 'FOR RESEARCH USE ONLY. NOT FOR USE IN DIAGNOSTIC OR THERAPEUTIC PROCEDURES'.